

**K2
ISM-EM
SystemMonitor
Combined Test System**

How to install software

IMV CORPORATION

Type of Document : Instruction Manual

System Applied : IMV Installer

English Edition

Version	Date	Contents
1.0.0	2020.11.02	First edition

Contents

Chapter 1 Overview.....	1-1
Chapter 2 Installing the Software.....	2-1
2.1 Installation of License	2-1
2.1.1 Installation of IMV Licence	2-1
2.2 I Installation of Application.....	2-5
2.2.1 Start installation of IMV Smart Setup	2-5
2.2.2 Installation of IMV Startup	2-8
2.2.3 Installation of K2 software	2-11
2.2.4 Installation of K2 manual	2-21
2.2.5 Installation of ISM-EM	2-25
2.2.6 Installation of K2 SystemMonitor	2-30
2.2.7 Installation of Combined Test System	2-36
2.2.8 Finish the installation of IMV Smart Setup	2-40
2.2.9 Automatic execution of IMV Start Up	2-41
Chapter 3 Uninstalling the Software.....	3-1
3.1 Uninstallation of License	3-1
3.1.1 Uninstallation of IMV Licence	3-1
3.2 Uninstallation of Application.....	3-4
3.2.1 Uninstallation of IMV Smart Setup	3-4
Chapter 4 Upgrading the Software.....	4-1
Chapter 5 Supplemental Explanation.....	5-1
5.1 Setting of PC	5-1

Chapter 1 Overview

This manual explains how to install the main software used in the vibration test equipment.

The software you have purchased are installed in batches.

The same applies to uninstallation.

The software to be installed in a batch are as follows

- IMV Startup
- K2 later than Version 20.0.0
- ISM-EM later than Version 5.0.0
- SystemMonitor later than Version 5.0.0
- Combined Test System later than Version 5.0.0

Only the software you have purchased is installed, but IMV Startup is always installed.

The installers comprise the following two installers shown below.

1) License installer (IMV Licence)

Install the license information.

2) Application installer (IMV Smart Setup)

Install the application software, manuals (PDF) and drivers.

Always install them in the following order: 1) License installer, 2) Application installer

Chapter 2 Installing the Software

2.1 Installation of License

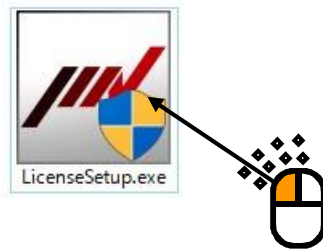
To install the software,

log in to the Windows operating system using the username with the “Administrator” right.

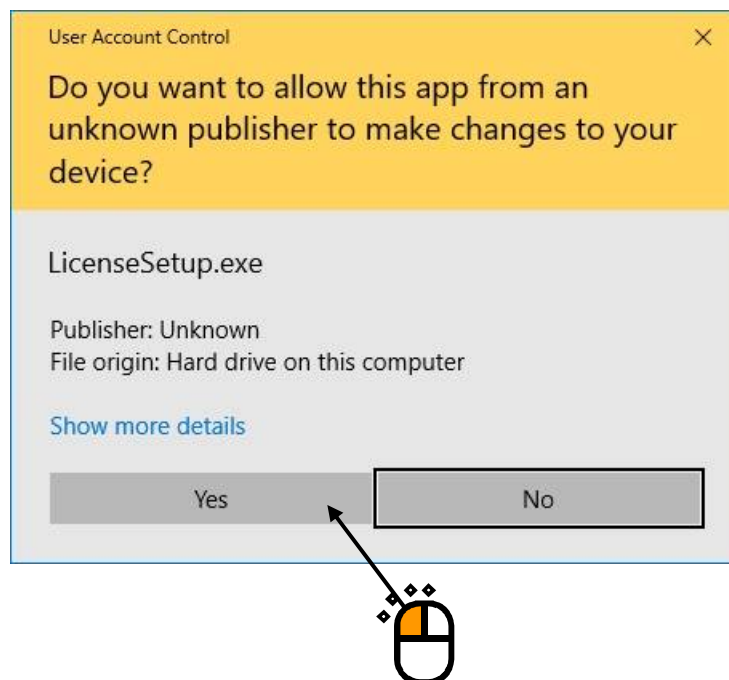
2.1.1 Installation of IMV Licence

< Step 1 >

Double-click the icon of ‘LicenseSetup.exe’ in the Disk1.

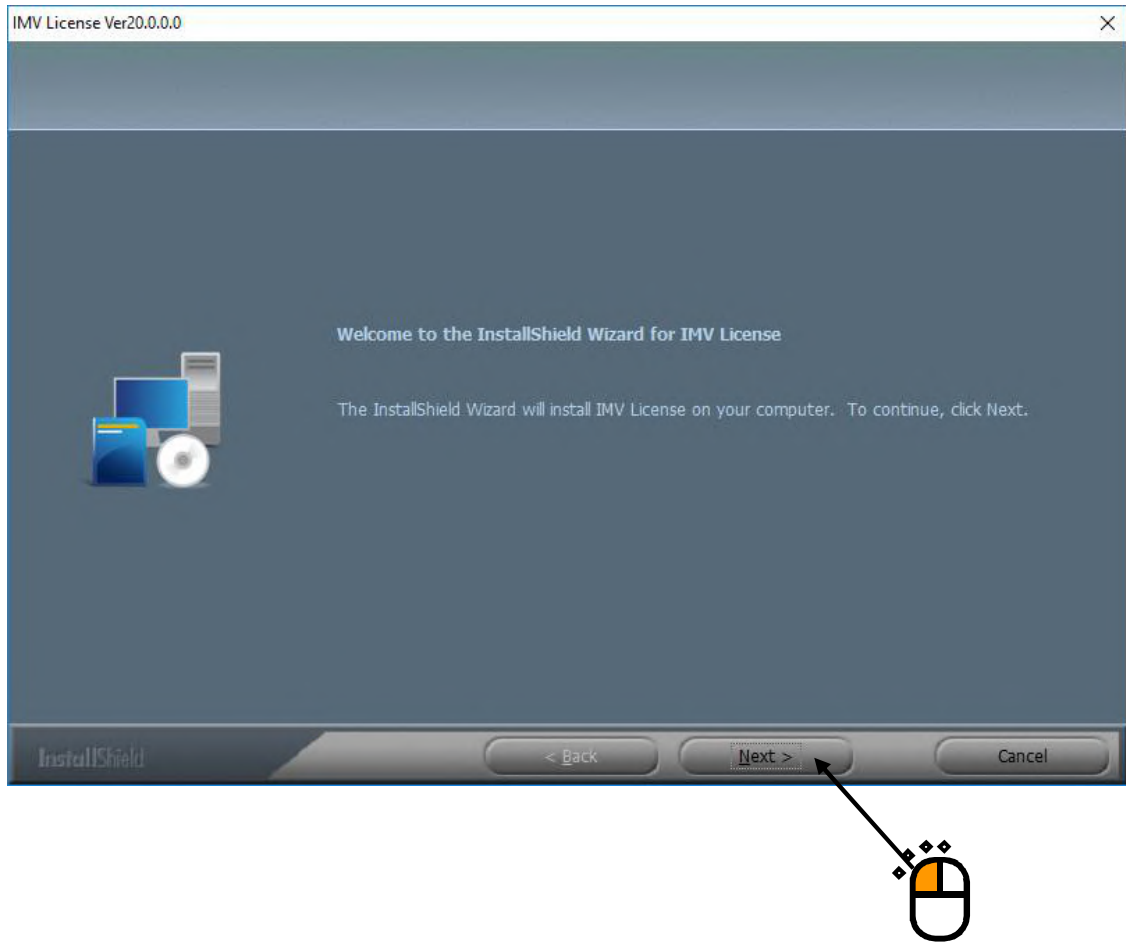


Press the button of [Yes] if the screen of ‘User Account Control’ appears.



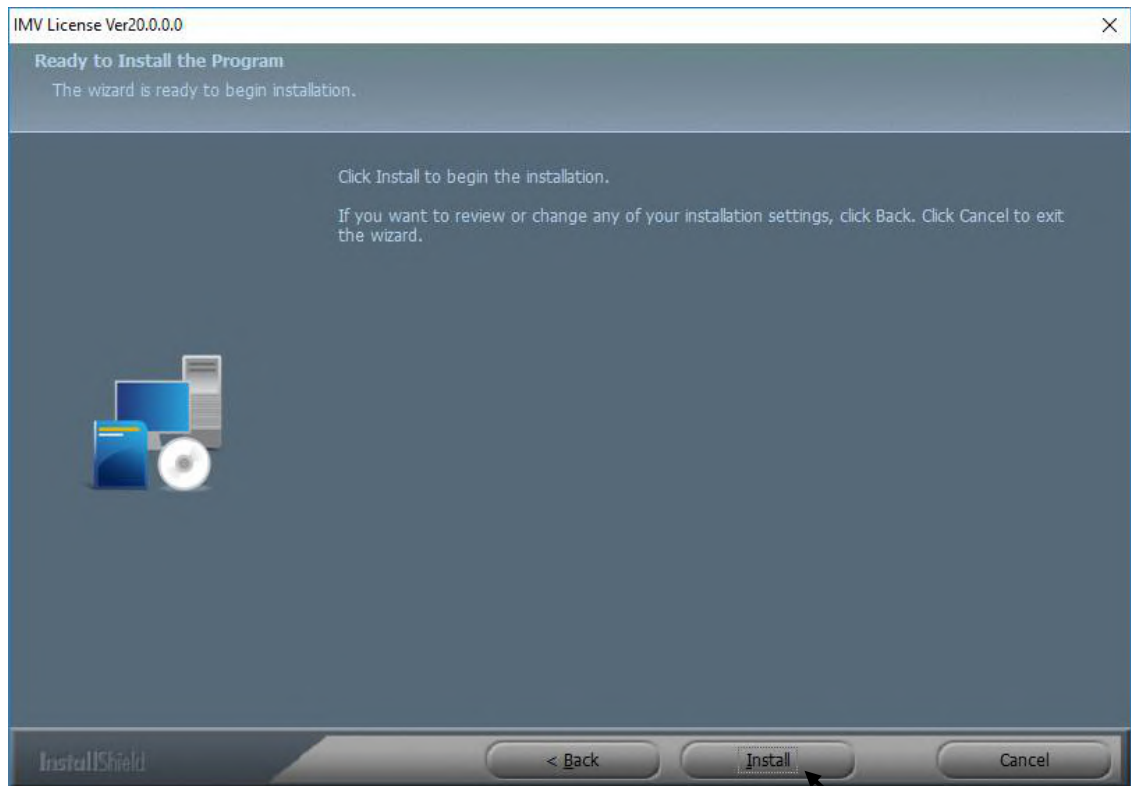
< Step 2 >

The initial screen of installation appears. Press the button of [Next].



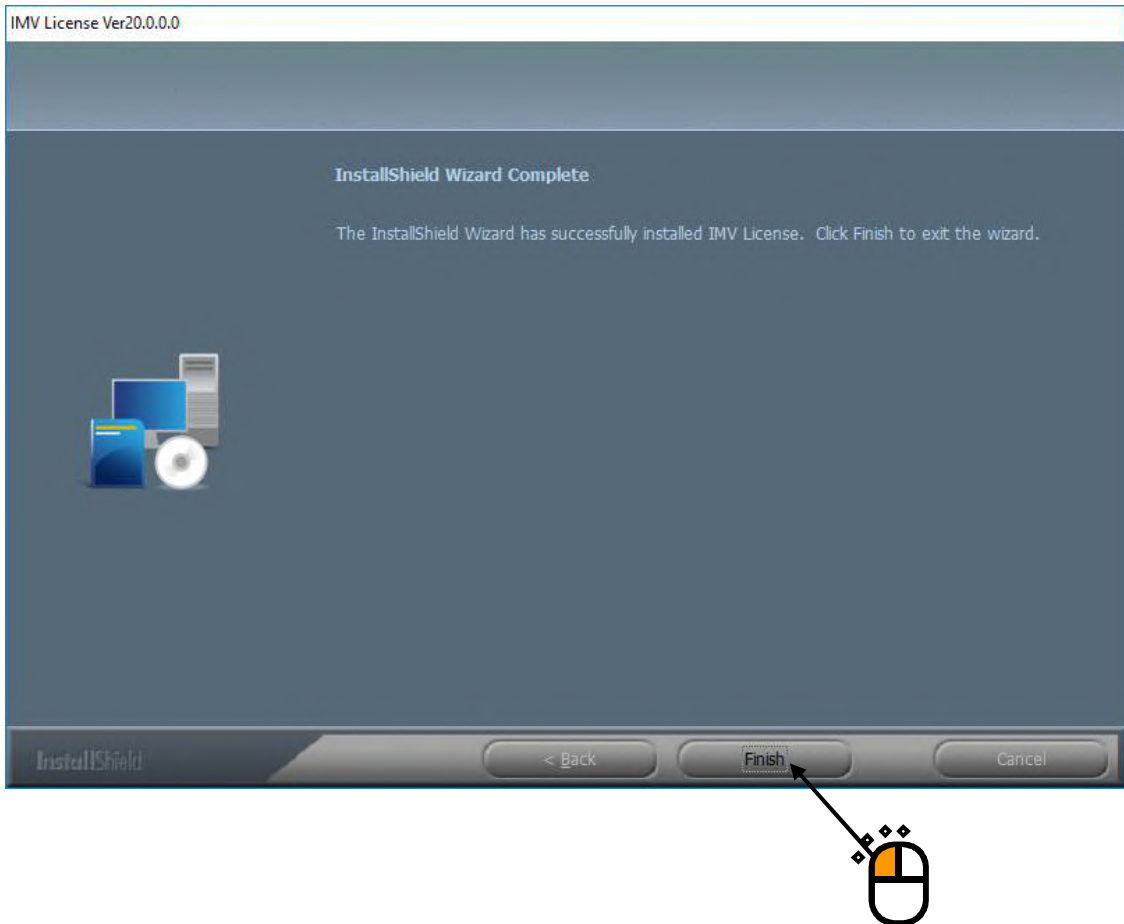
< Step 3 >

The screen of starting installation appears. Press the button of [Install].
Then, installation of the license information is started.



< Step 4 >

After the installation is completed, the screen noticing the completion of installation appears. Press the button of [Finish].



Then, installation of license information is complete.

Proceed to installation of application.

2.2 | Installation of Application

To install the software,

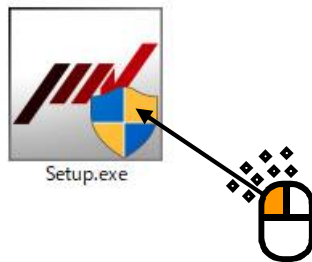
log in to the Windows operating system using the username with the “Administrator” right.

2.2.1 Start installation of IMV Smart Setup

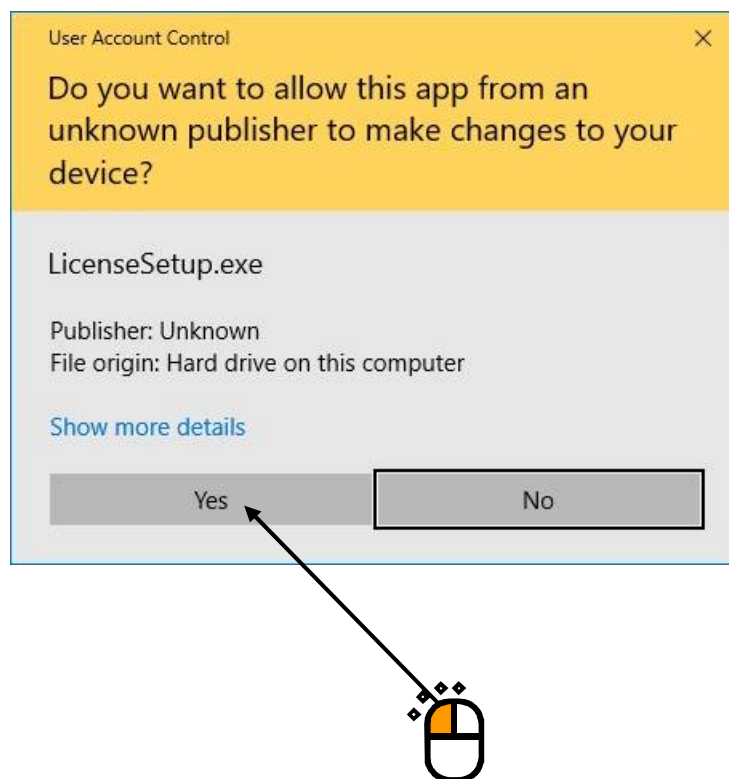
IMV Smart Setup will install the software you have purchased.

< Step 1 >

Double-click the icon of ‘Setup.exe’ in the Disk2.

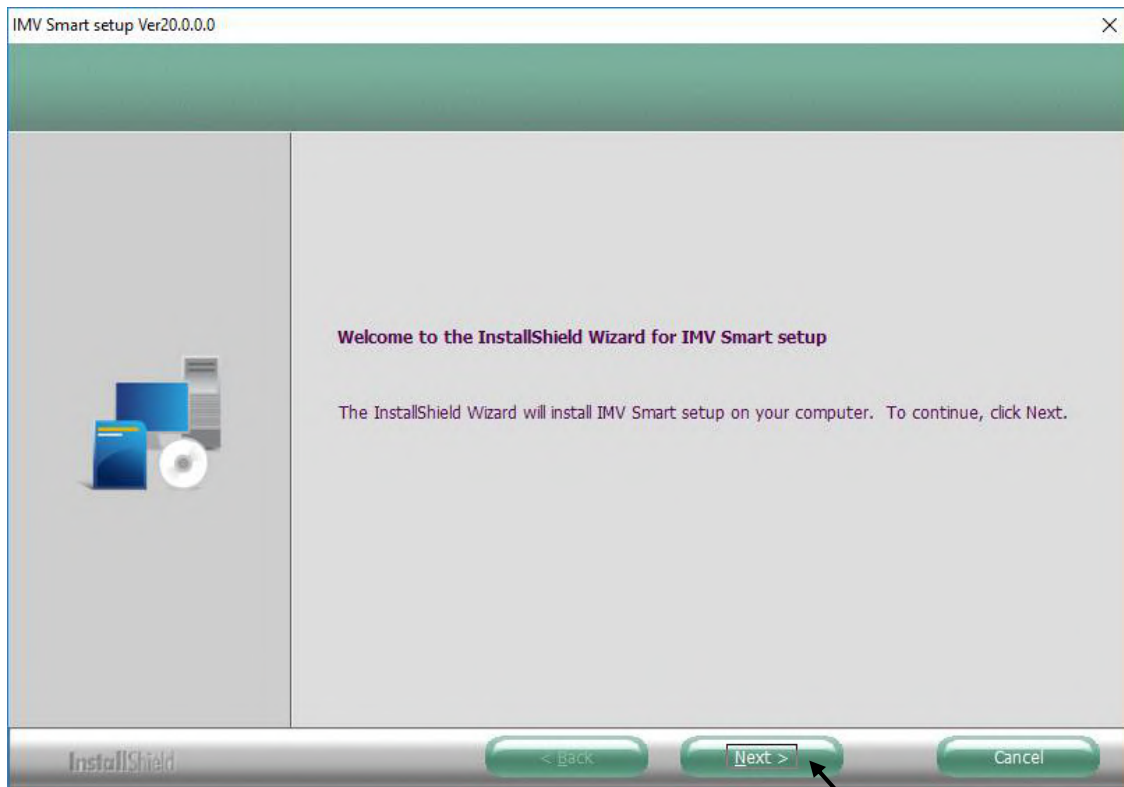


Press the button of [Yes] if the screen of ‘User Account Control’ appears.



< Step 2 >

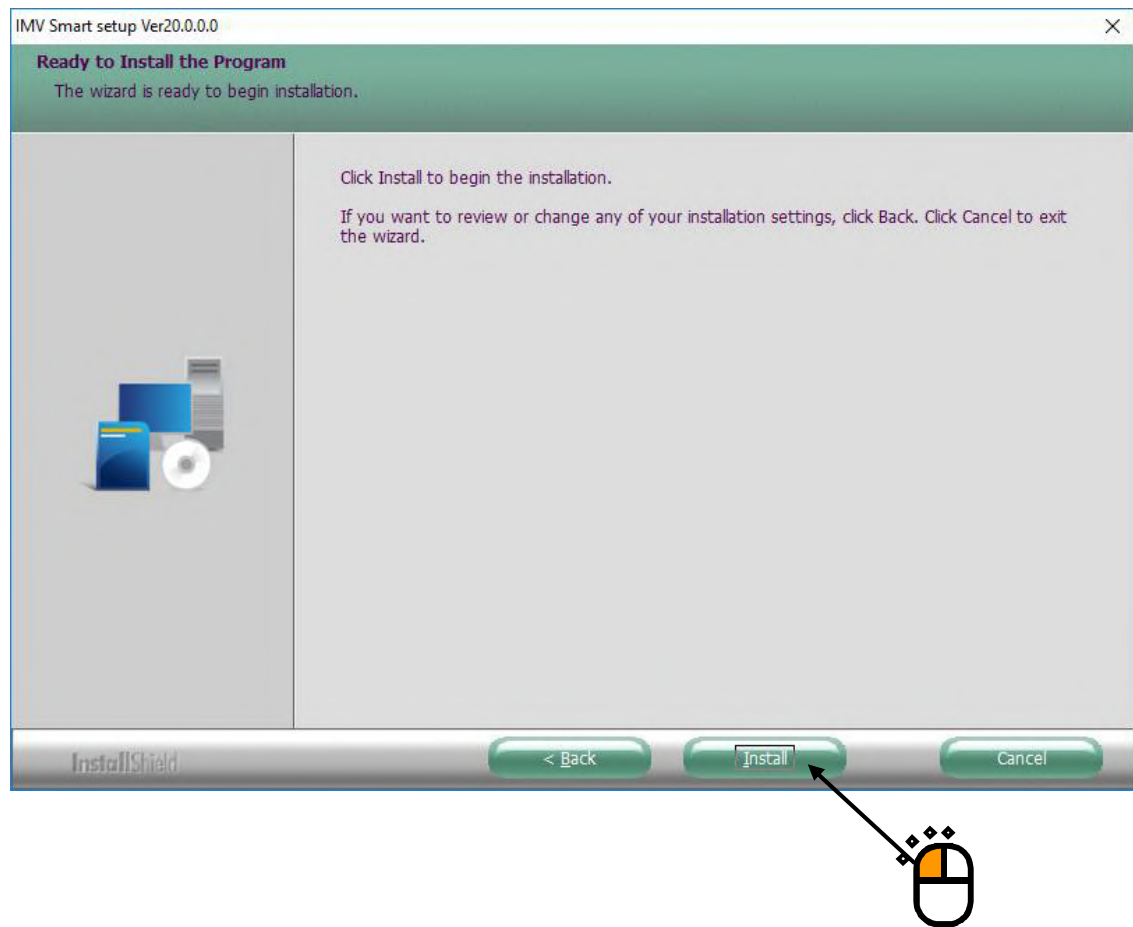
The initial screen of IMV Smart Setup installation of appears. Press the button of [Next].



< Step 3 >

The screen of starting installation appears. Press the button of [Install].

Installation is started.



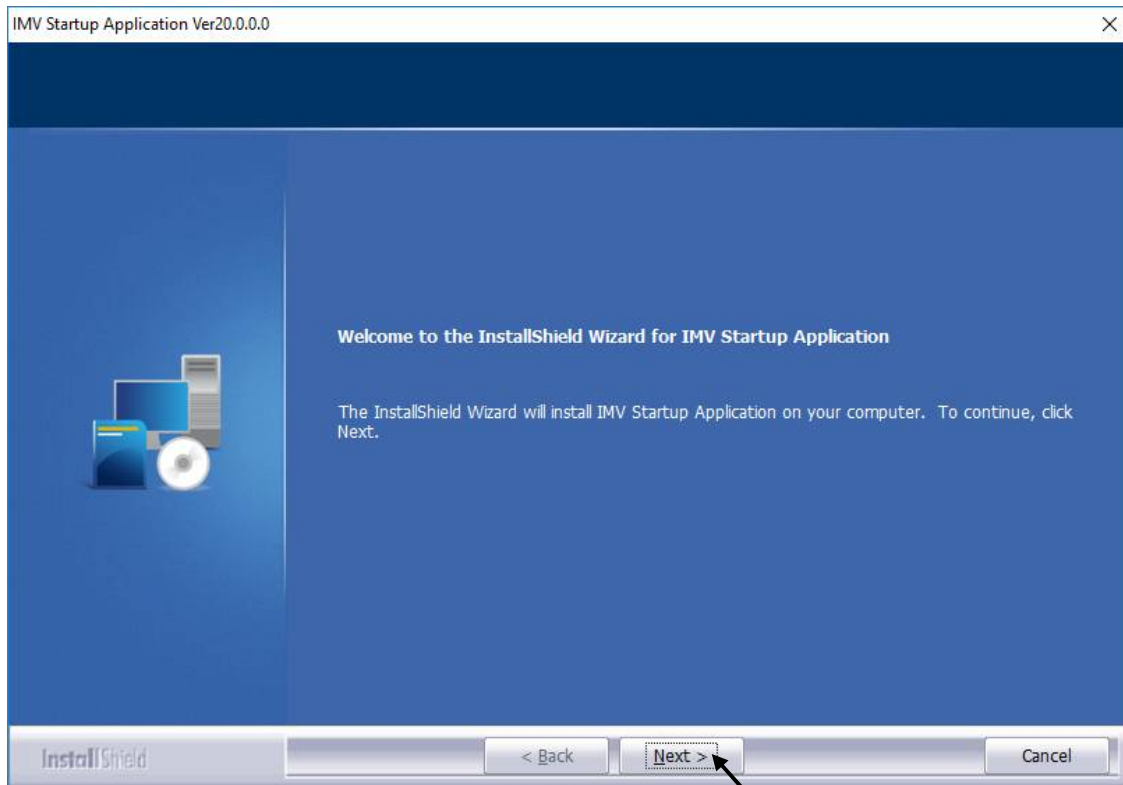
Proceed to installation of IMV Startup.

2.2.2 Installation of IMV Startup

The installation of IMV Startup will begin automatically.

< Step 1 >

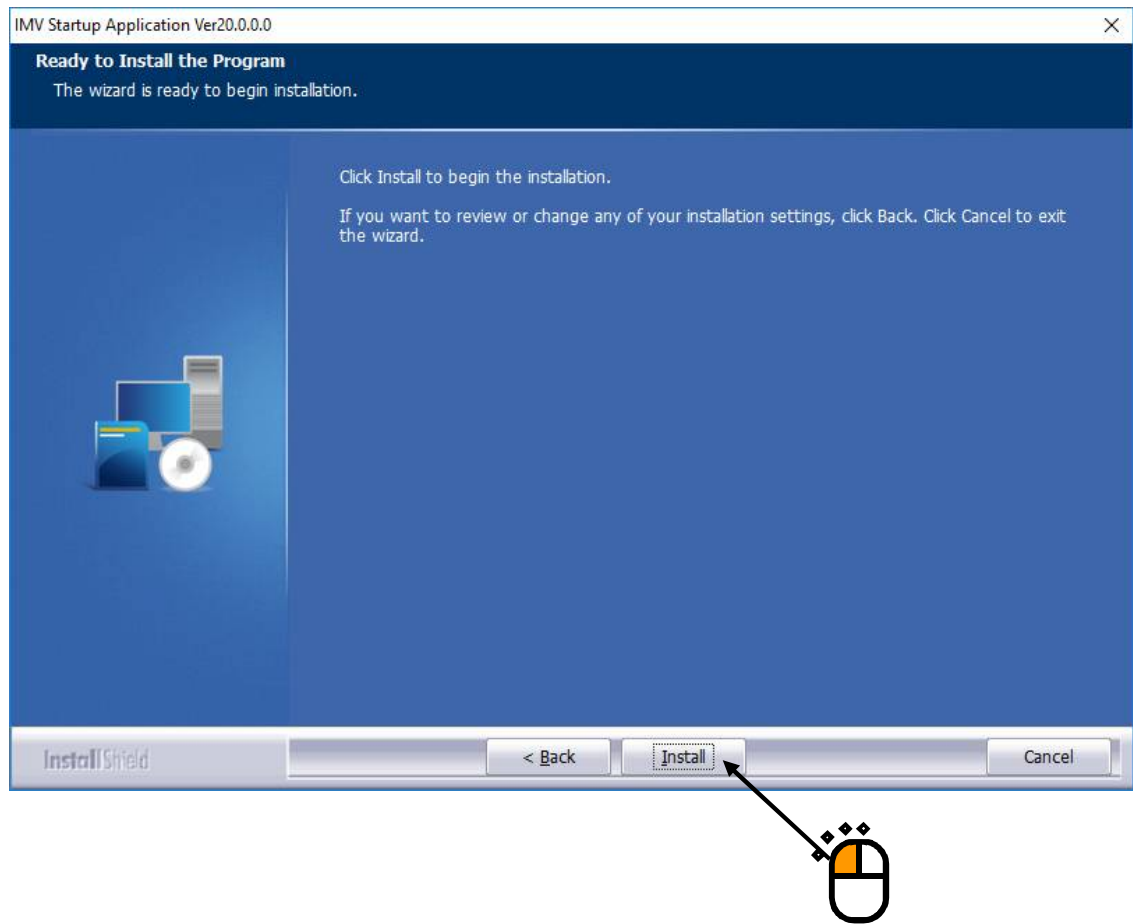
The initial screen of installation appears. Press the button of [Next].



< Step 2 >

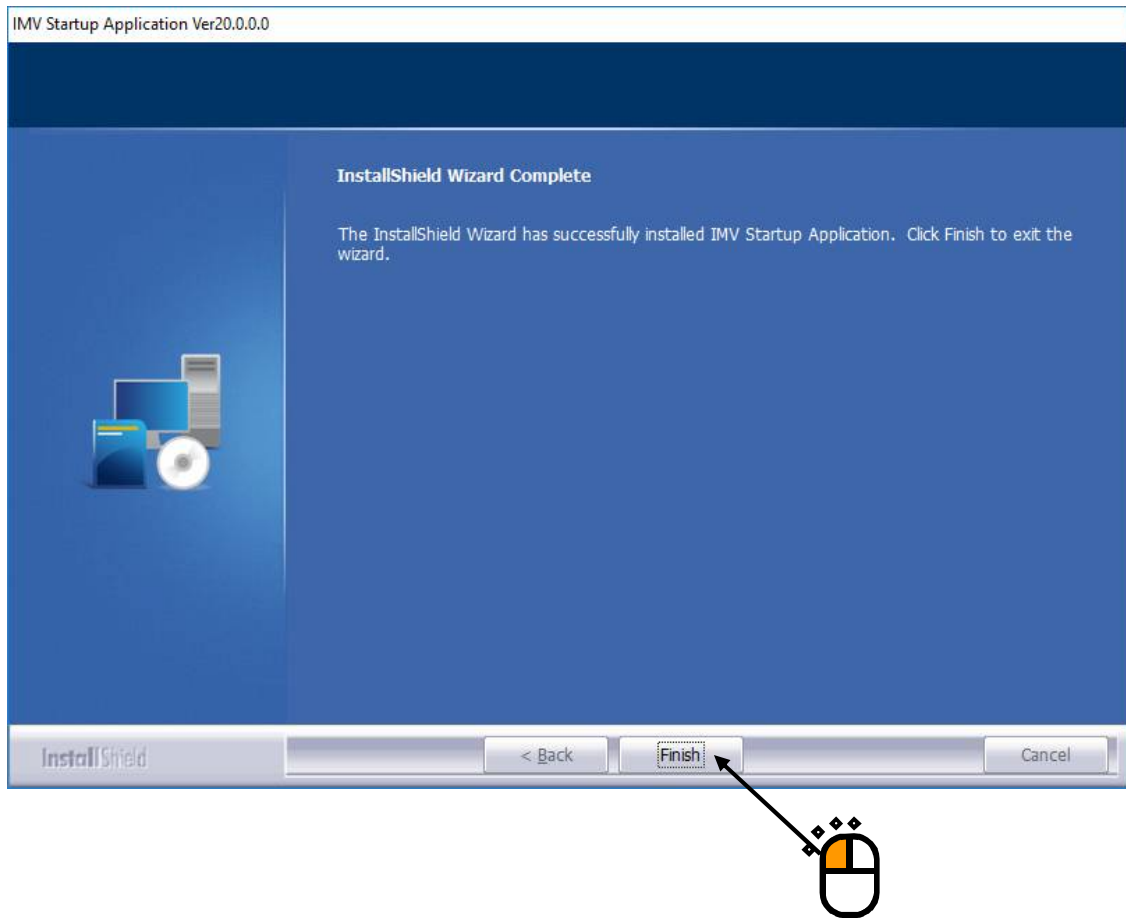
The screen of starting installation appears. Press the button of [Install].

Installation is started.



< Step 3 >

When installation is complete, the screen of noticing the completion of installation appears. Press the button of [Finish]



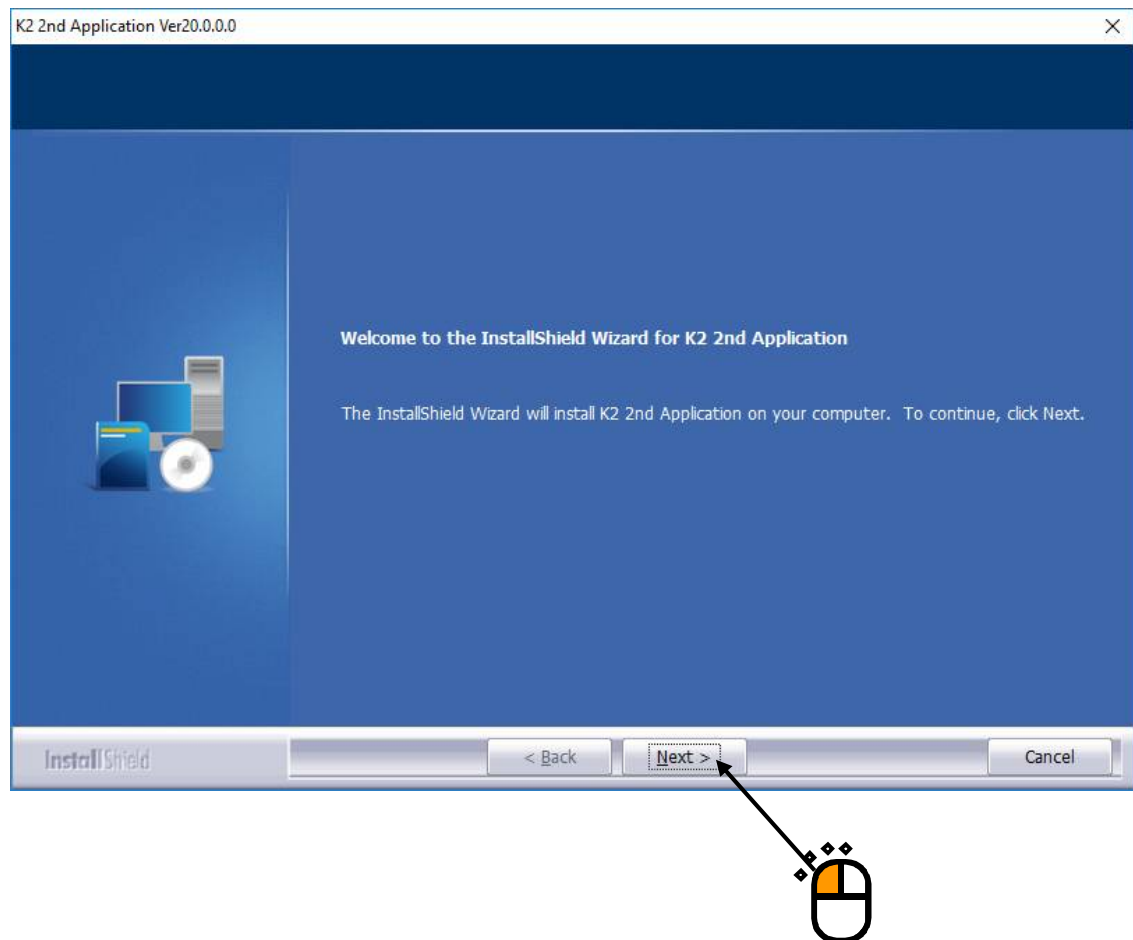
Proceed to the next section.

2.2.3 Installation of K2 software

If you have purchased K2, the installation of the K2 software will begin automatically.
If you have not purchased it, please continue to the next section.

< Step 1 >

The initial screen of installation appears. Press the button of [Next].



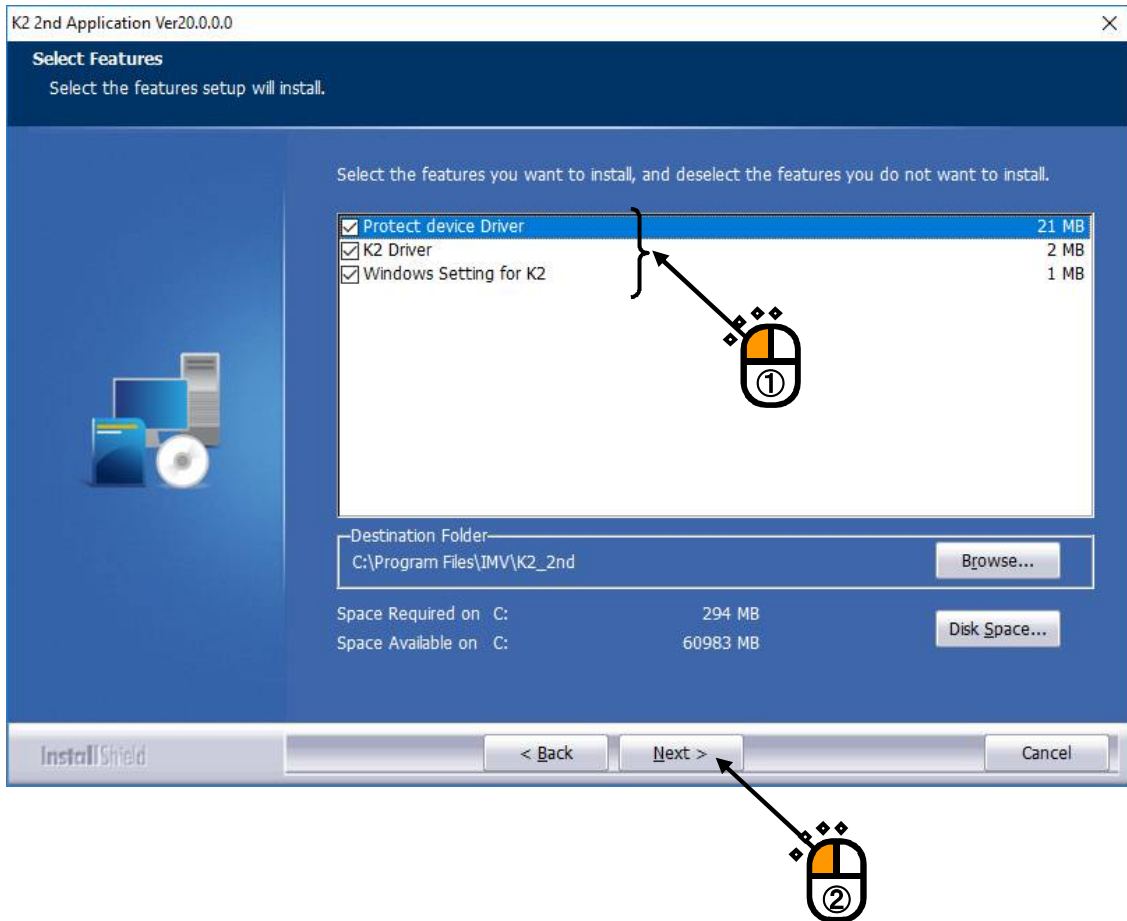
< Step 2 >

The screen of setting the installation conditions appears.

After finishing the required setting, press the button of [Next].

Items shown in the list are as follows. **Select all the items, normally.**

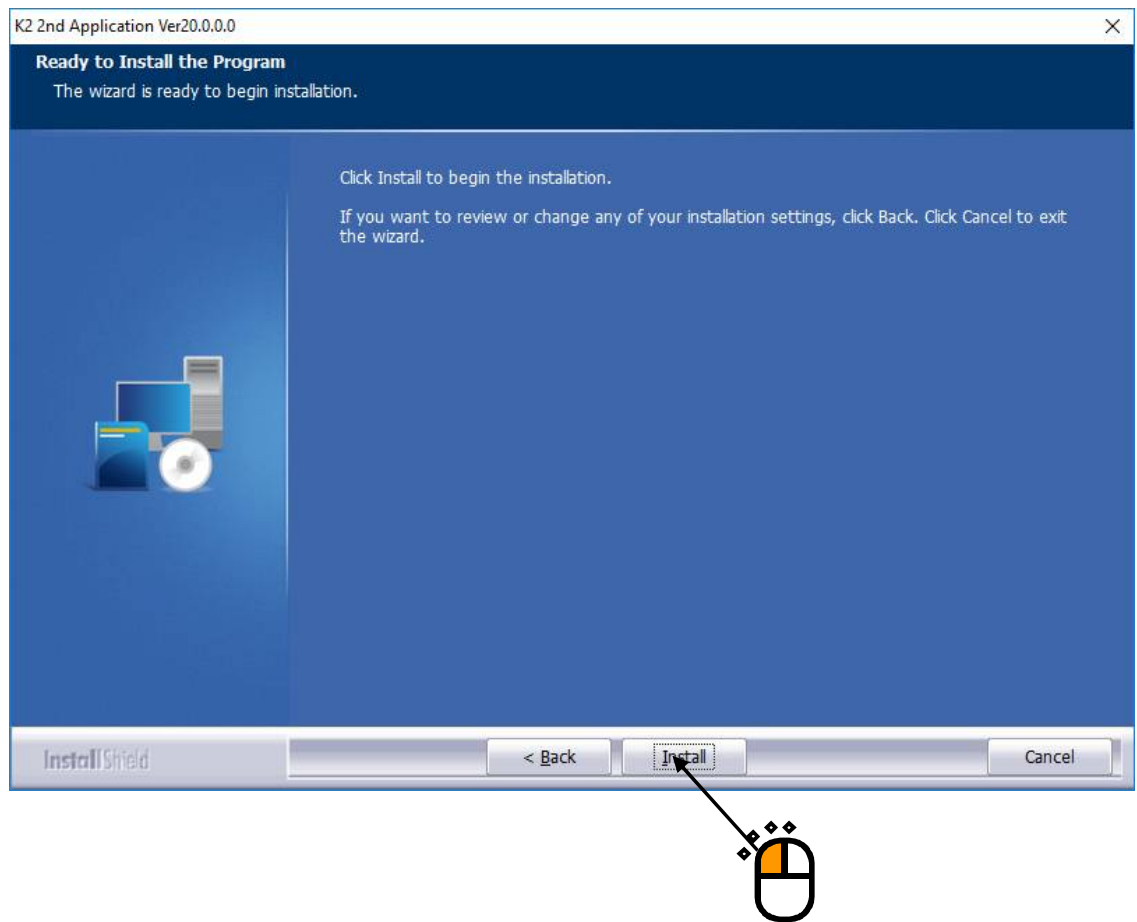
- K2 Driver: The K2 interface board device driver can be installed.
- Protect device Driver: The device driver of protect device is installed.
- Windows Setting for K2: Setting of the PC “Section 5.1” is executed for using the K2.



< Step 3 >

The screen of starting installation appears. Press the button of [Install].

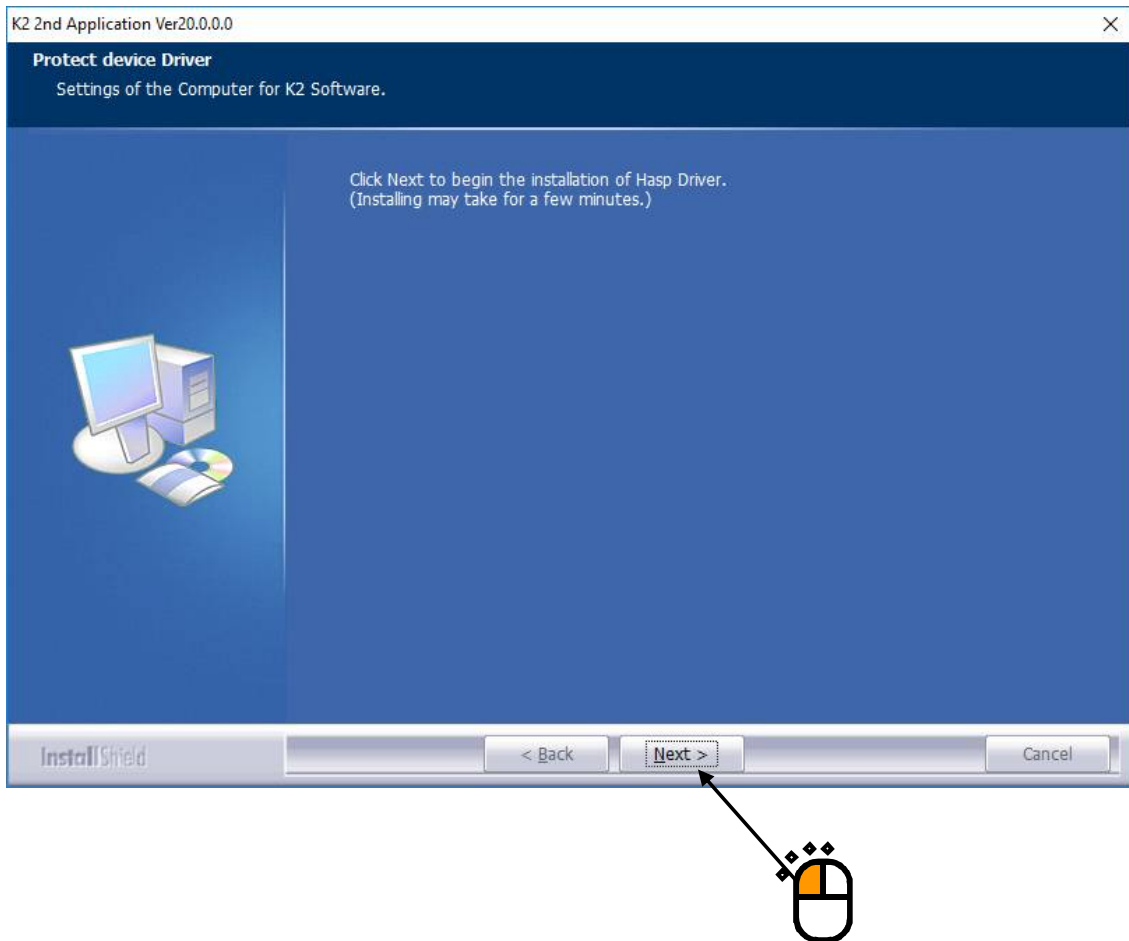
Installation is started.



< Step 4 >

After the installation of the K2 application is finished, screen of starting the installation of the device driver of protect device appears.

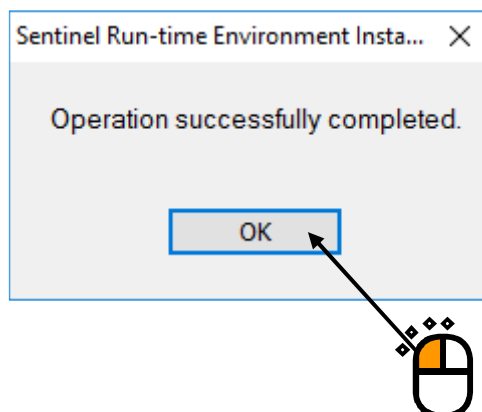
Press the button of [Next].



< Step 5 >

After installation of the protect device driver is finished, the screen of noticing the completion of installation appears.

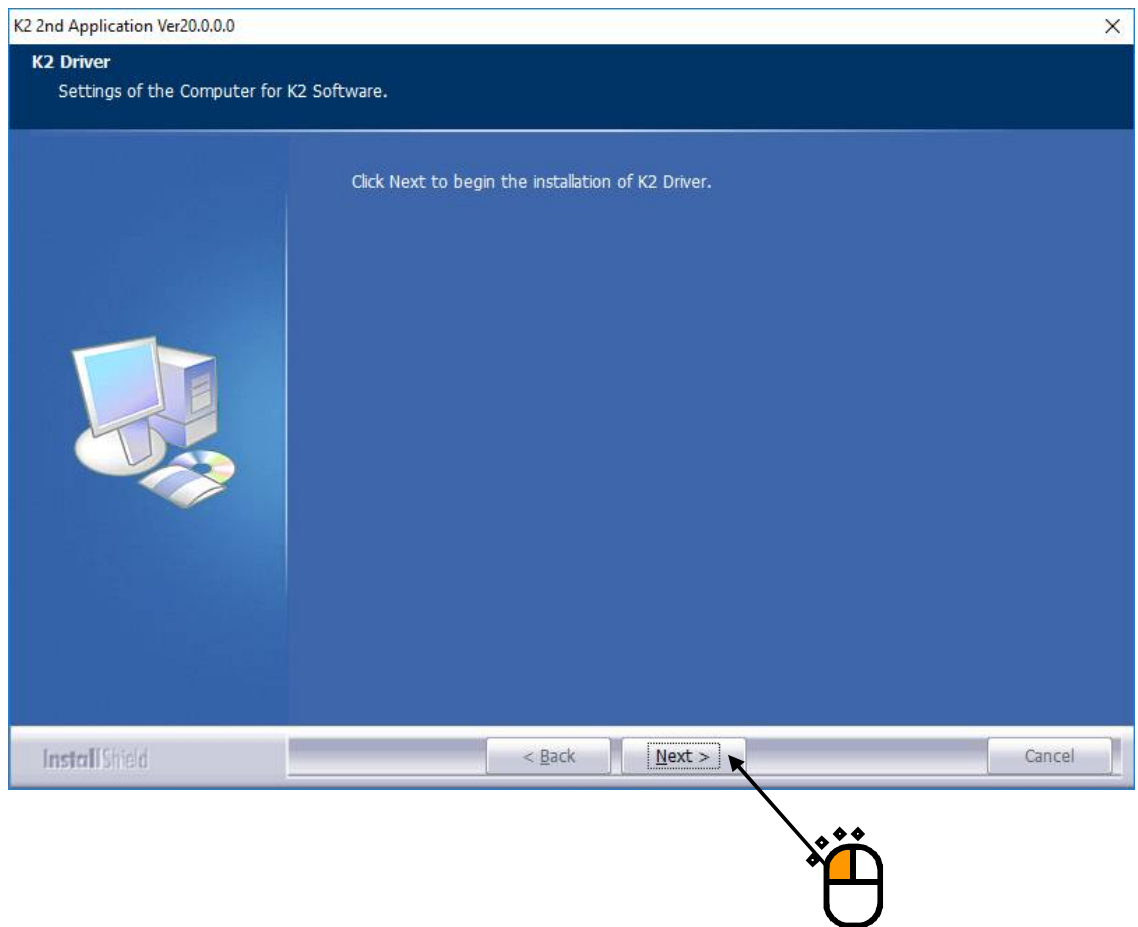
Press the button of [OK].



< Step 6 >

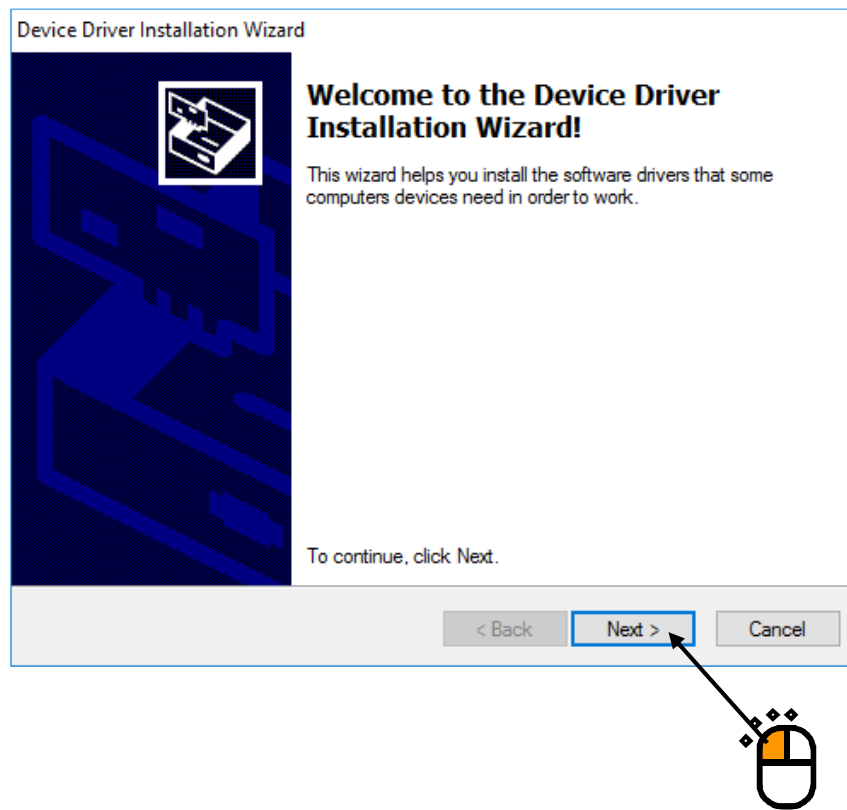
After installation of the protect device driver is finished, the screen noticing the installation of the K2 interface board device driver appears.

Press the button of [Next].



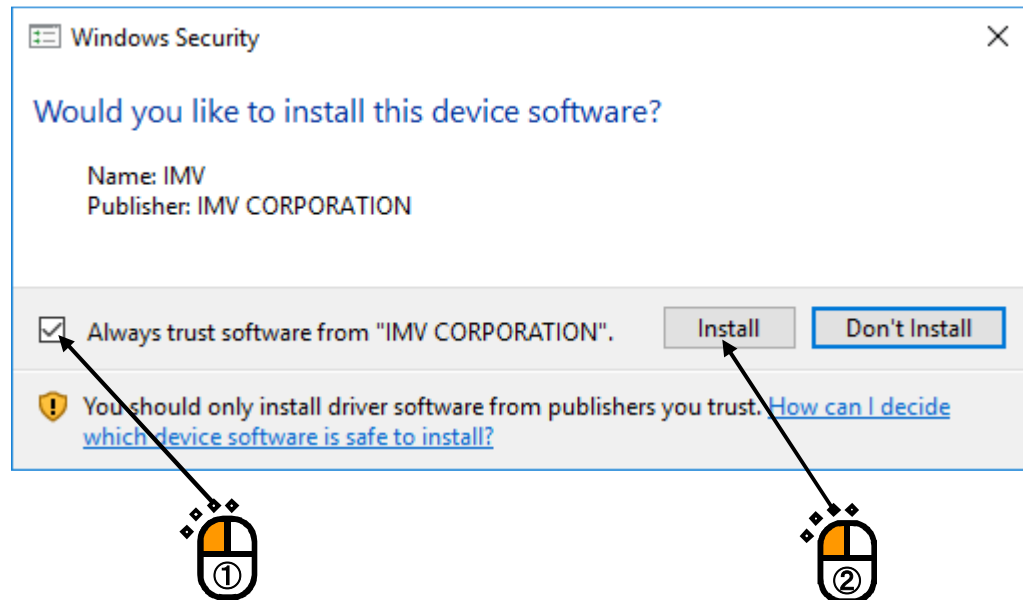
< Step 7 >

The screen of starting the installation of the device driver appears. Press the button of [Next].
Installation of the device driver is started.



< Step 8 >

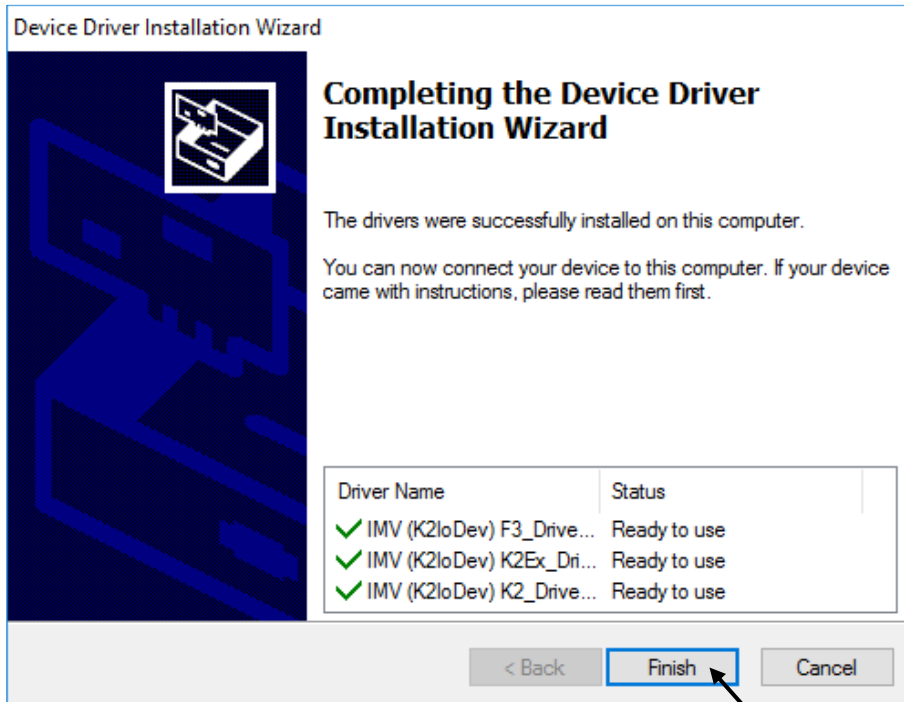
If the screen of confirming the device driver installation* appears, check the box for ‘Always trust software “IMV CORPORATION”.’, and press the button of [Install].



- *) Unless the box of ‘Always trust software “IMV CORPORATION”.’ is checked, the screen confirming installation appears for three times.
If the box of ‘Always trust software “IMV CORPORATION”.’ is checked before installation, the screen confirming installation will not appear when the device driver is installed at the next time.

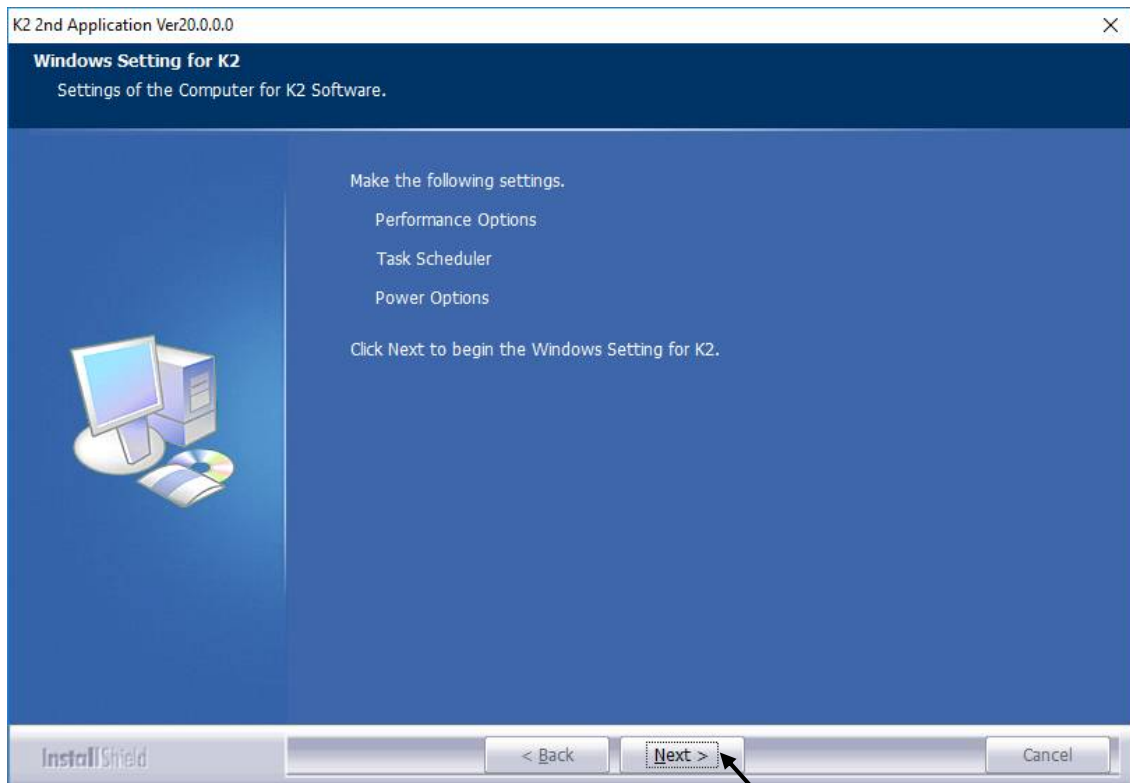
< Step 9 >

The screen of finishing the device driver installation appears. Press the button of [Finish].



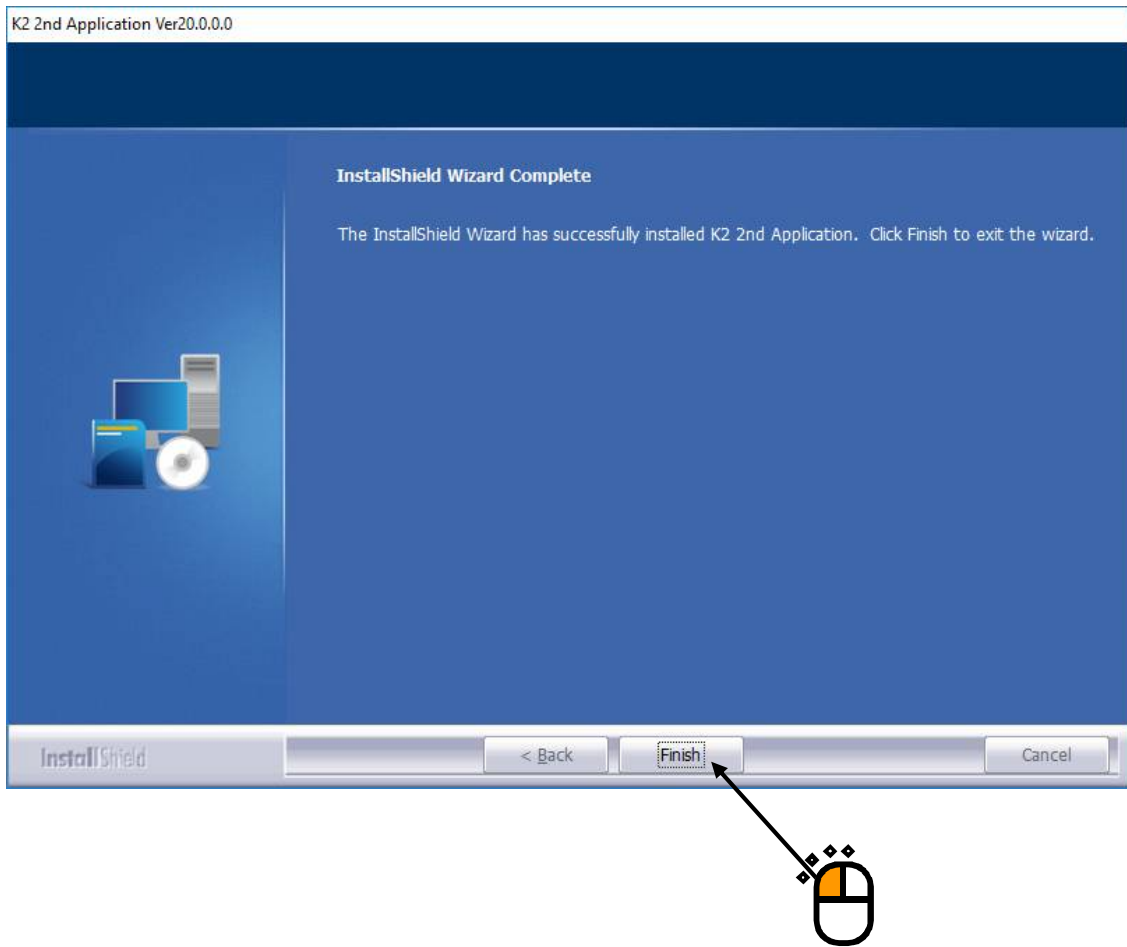
< Step 10 >

The screen of starting the setting of PC for the use of K2 appears. Press the button of [Next].
Then, the PC setting process is started.



< Step 11 >

When installation is complete, the screen of noticing the completion of installation appears. Press the button of [Finish]



After the installation of IMV Smart Setup is completed, a shortcut "K2Launcher" will be created on the desktop.



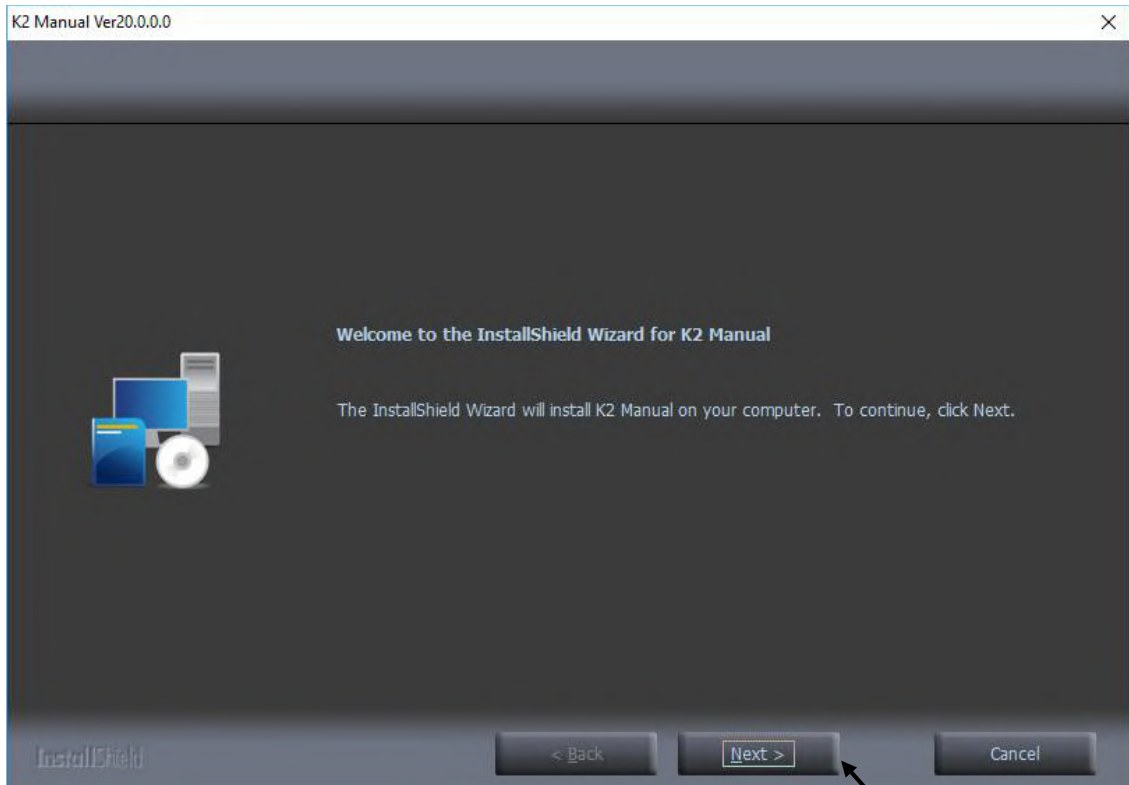
Proceed to the next section.

2.2.4 Installation of K2 manual

If you have purchased K2, the installation of the K2 manual will begin automatically.
If you have not purchased it, please continue to the next section.

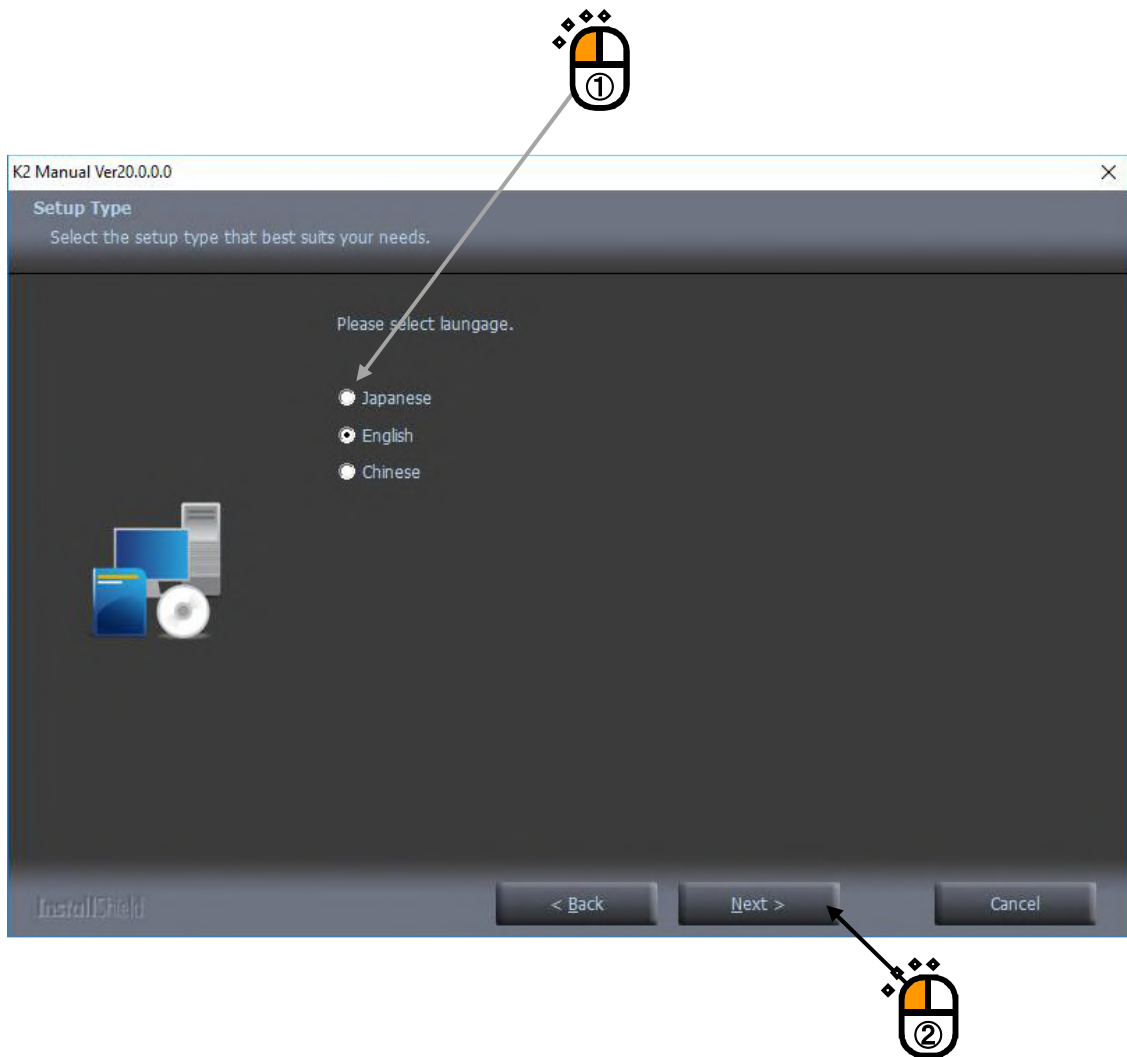
< Step 1 >

The initial screen of installation appears. Press the button of [Next].



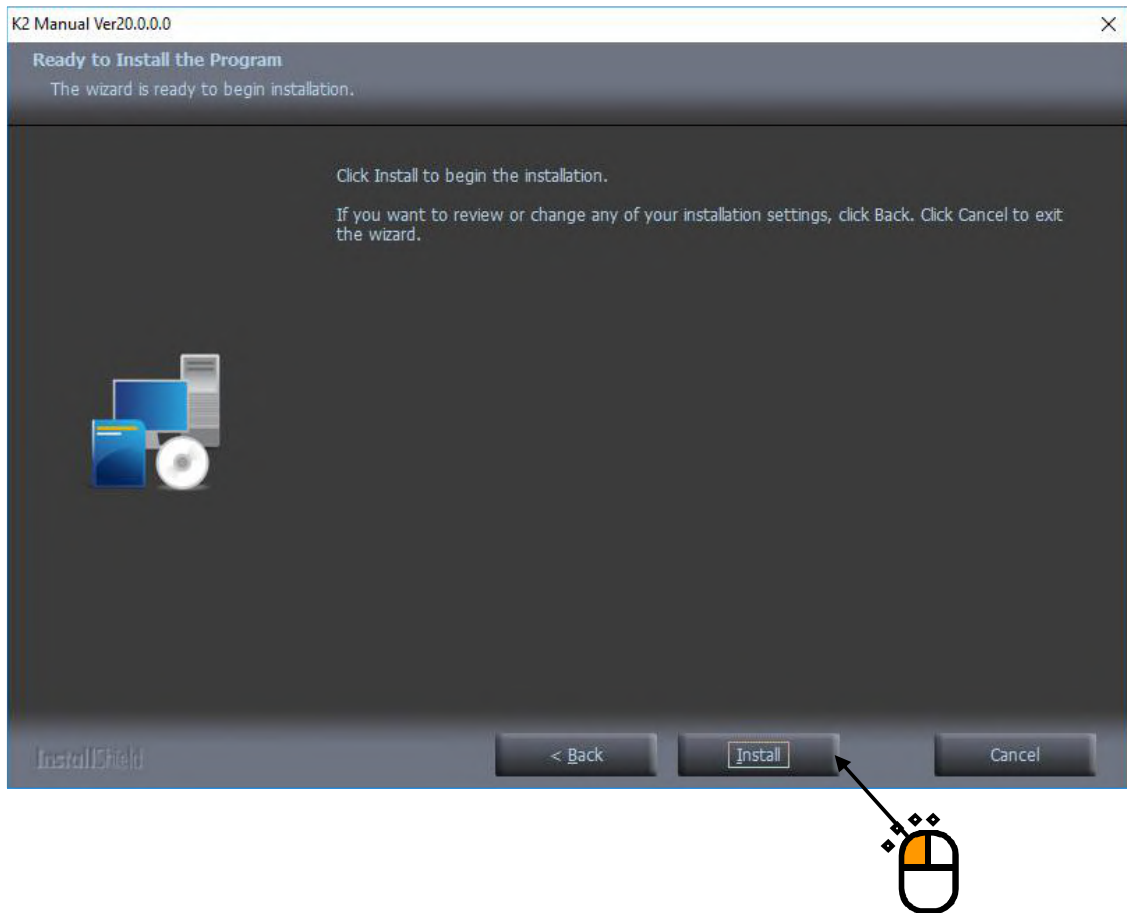
< Step 2 >

The screen of selecting the language of manual appears.
Select your desired language, and press the button of [Next].



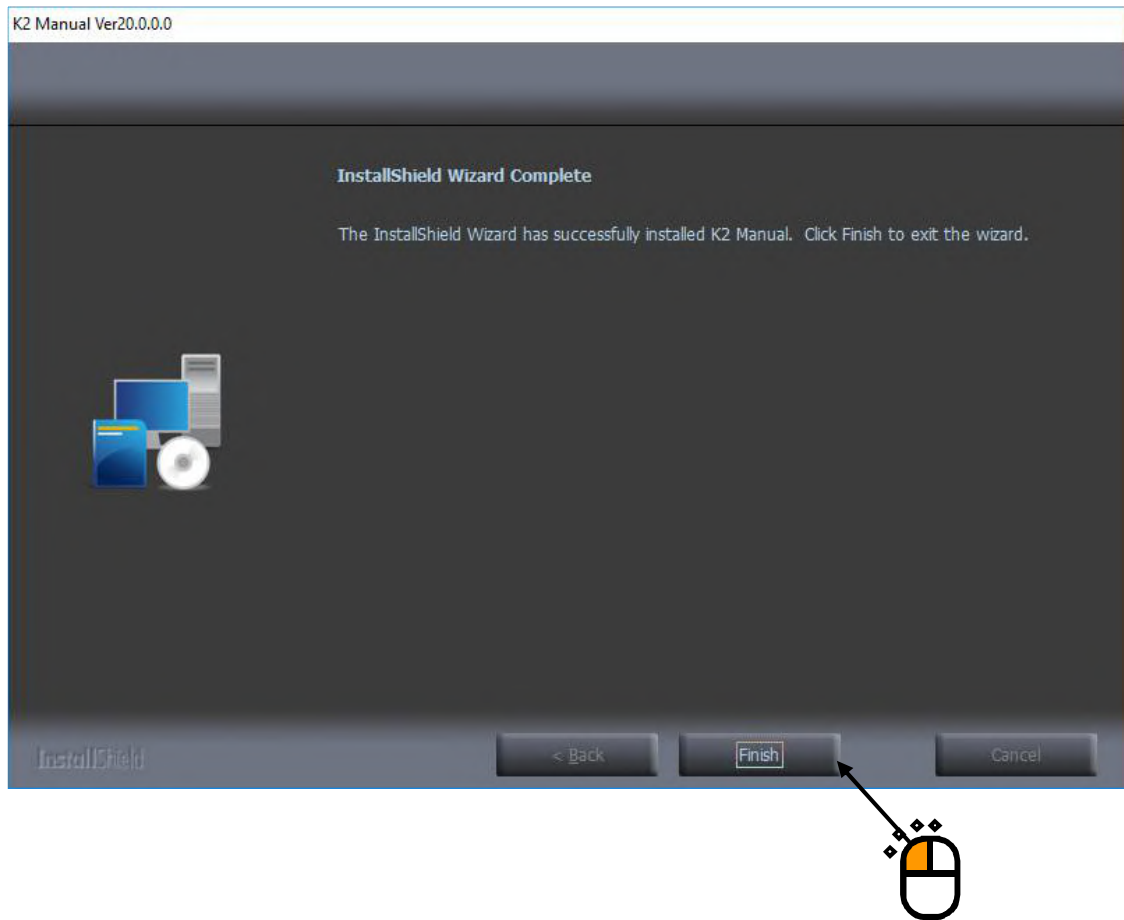
< Step 3 >

The screen of starting installation appears. Press the button of [Install].
Installation is started.



< Step 4 >

When installation is complete, the screen of noticing the completion of installation appears. Press the button of [Finish]



Proceed to the next section.

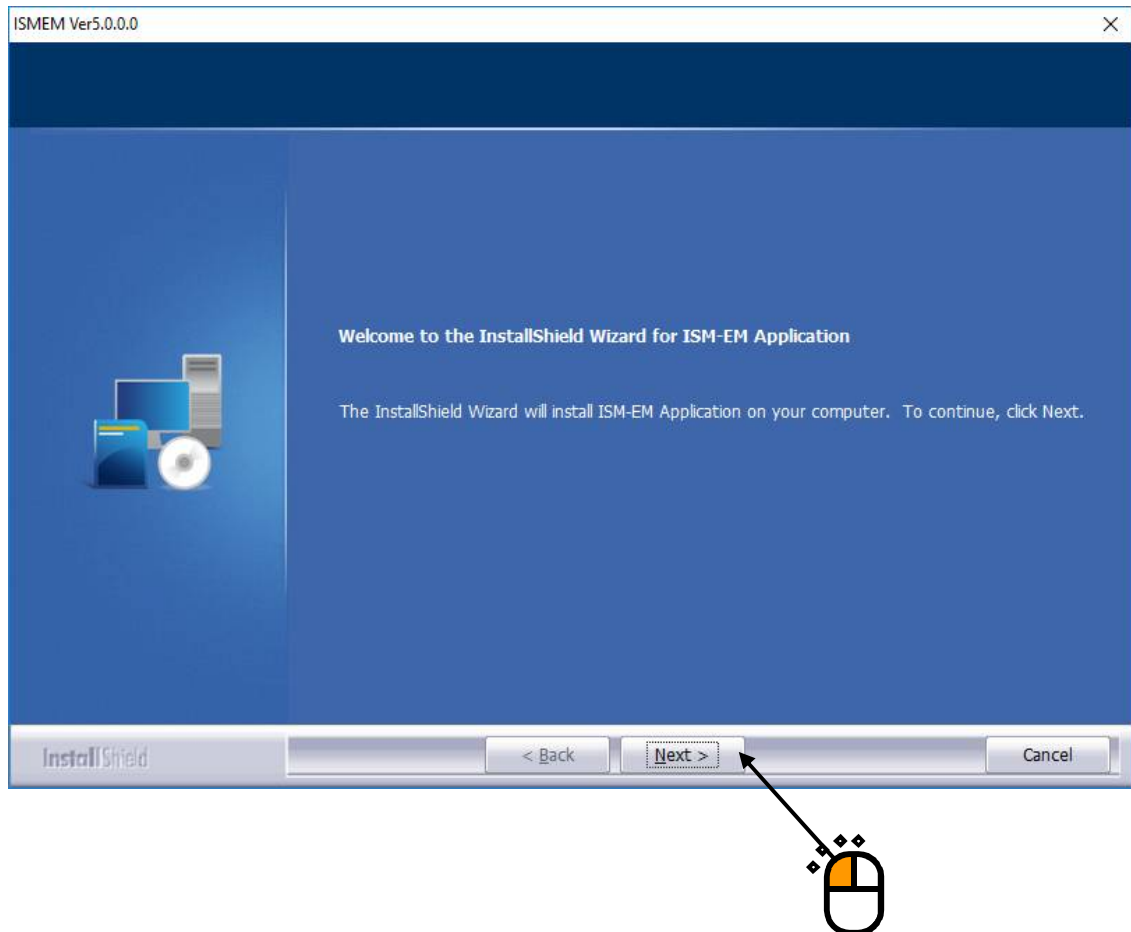
2.2.5 Installation of ISM-EM

If you have purchased ISM (Eco-Shaker), the installation of the ISM software will begin automatically.

If you have not purchased it, please continue to the next section.

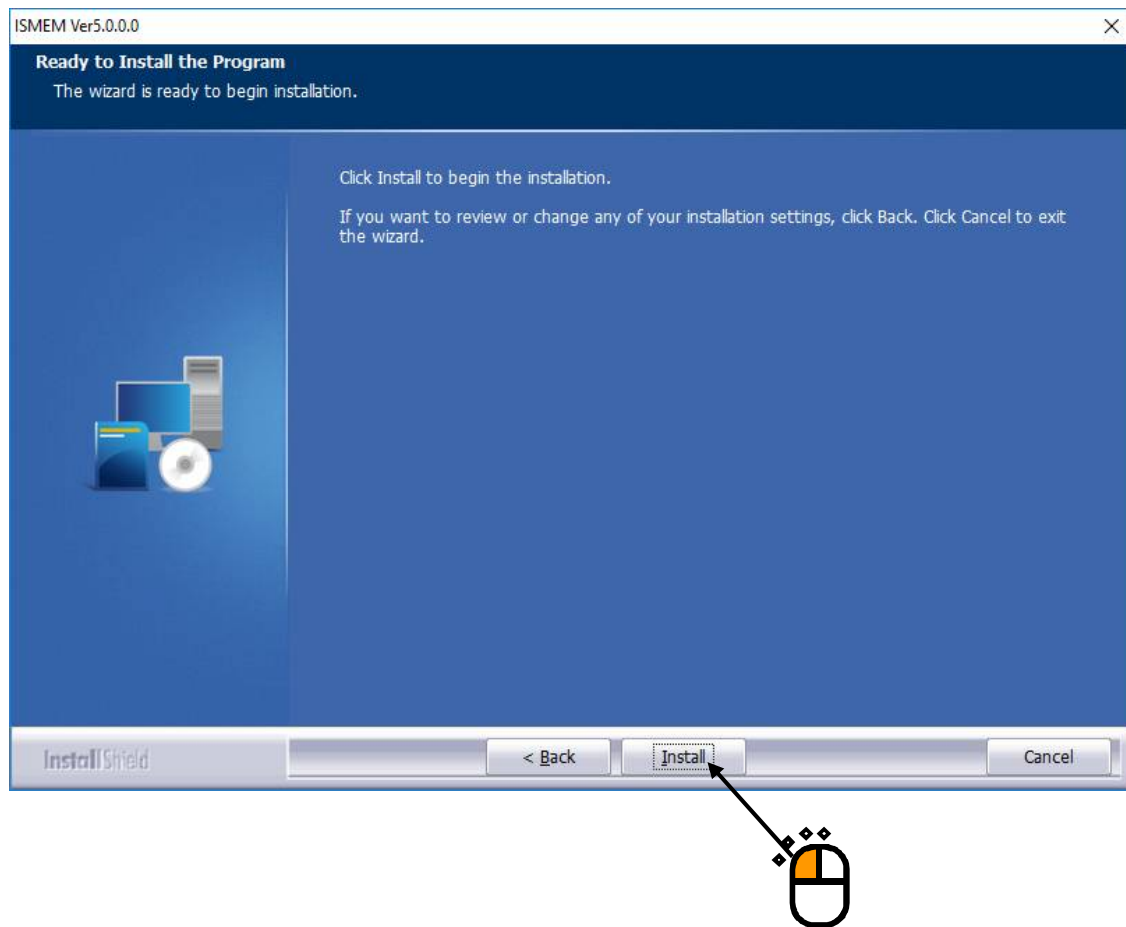
< Step 1 >

The initial screen of installation appears. Press the button of [Next].



< Step 2 >

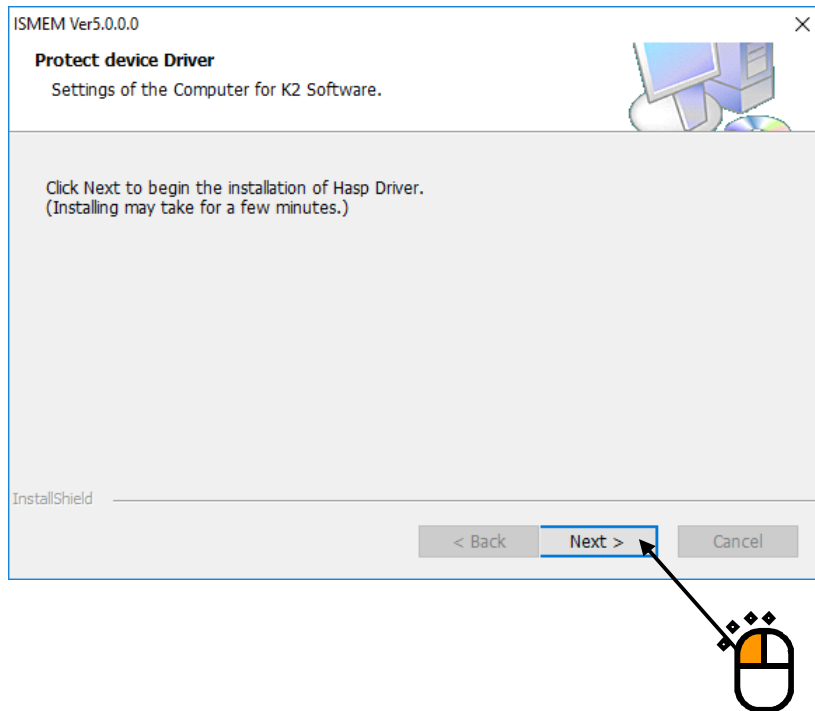
The screen of starting installation appears. Press the button of [Install].
Installation is started.



< Step 3 >

After the installation of ISM software is finished, screen of starting the installation of the device driver of protect device appears.

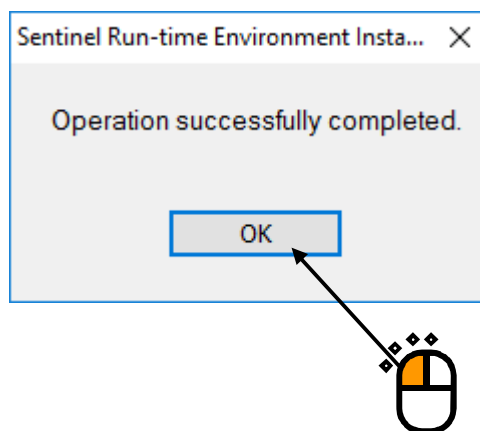
Press the button of [Next].



< Step 4 >

After installation of the protect device driver is finished, the screen of noticing the completion of installation appears.

Press the button of [OK].



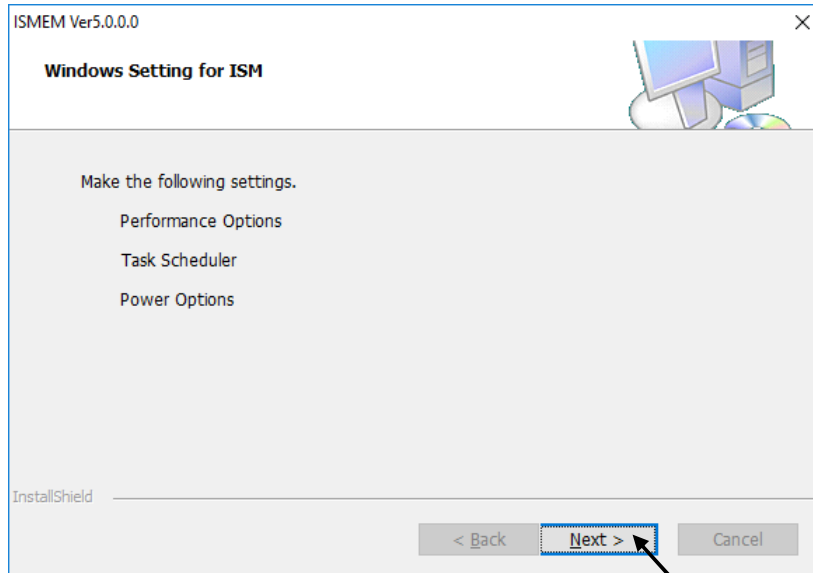
< Step 5 >

The screen of starting the setting of PC for the use of ISM appears.

Press the button of [Next].

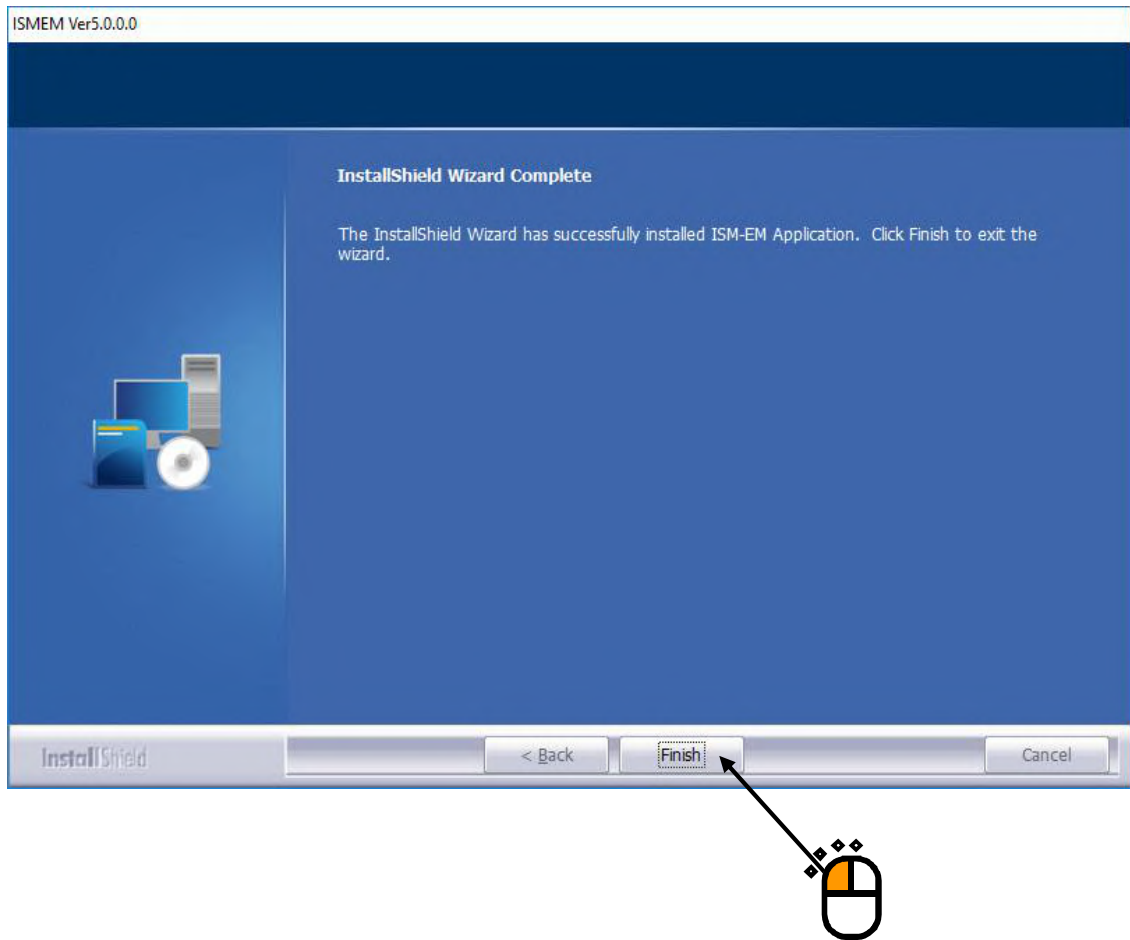
Then, the PC setting process is started.

- Windows Setting for ISM: Setting of the PC “Section 5.1” is executed for using the ISM.



< Step 6 >

When installation is complete, the screen of noticing the completion of installation appears. Press the button of [Finish]



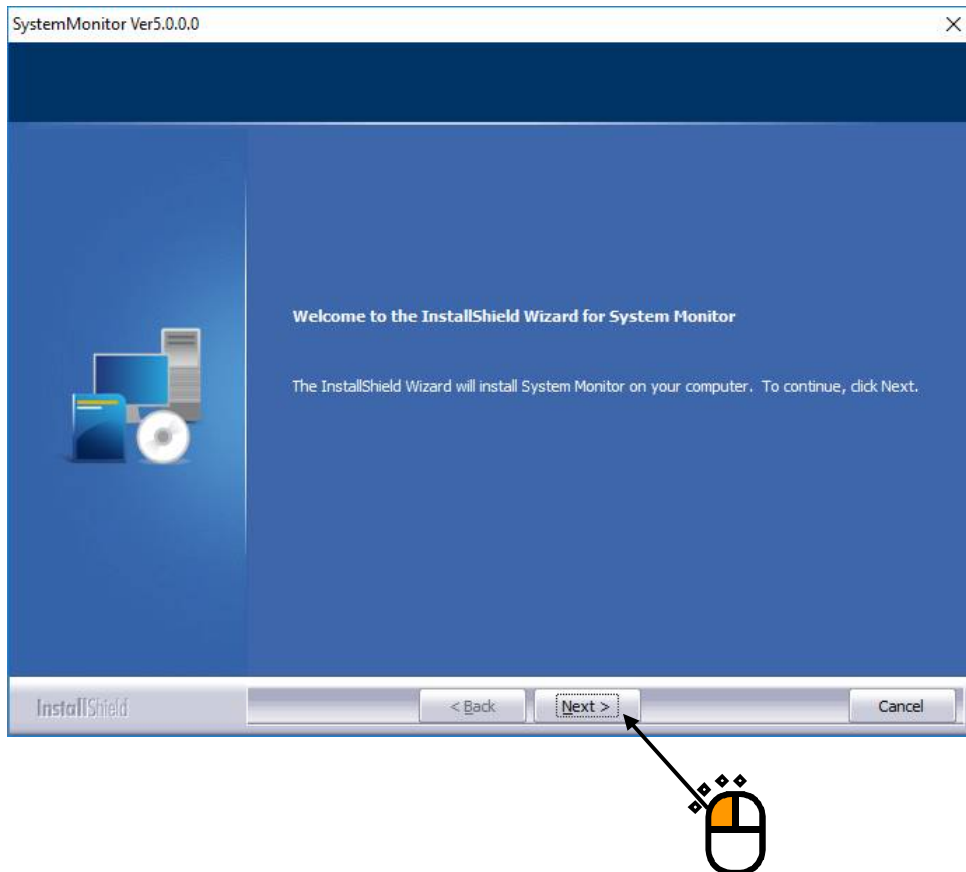
Proceed to the next section.

2.2.6 Installation of K2 SystemMonior

If you have purchased SystemMonior, the SystemMonior installation will begin automatically.
If you have not purchased it, please continue to the next section.

< Step 1 >

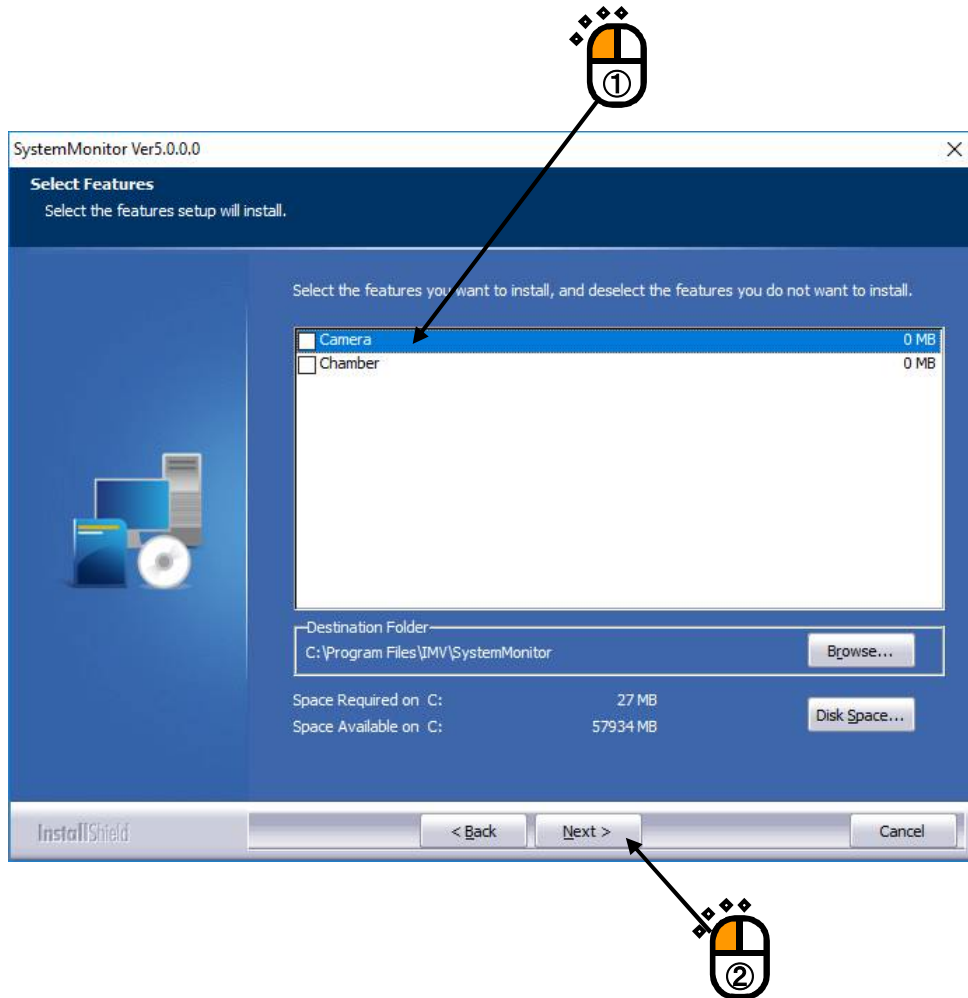
The initial screen of installation appears. Press the button of [Next].



< Step 2 >

A screen to select optional features appears.

Select required features and click on the [Next] button.



Note) 1: **Select “Camera” only if a web camera is used.**

Installing the camera feature without the use of a web camera may cause the system to be unstable.

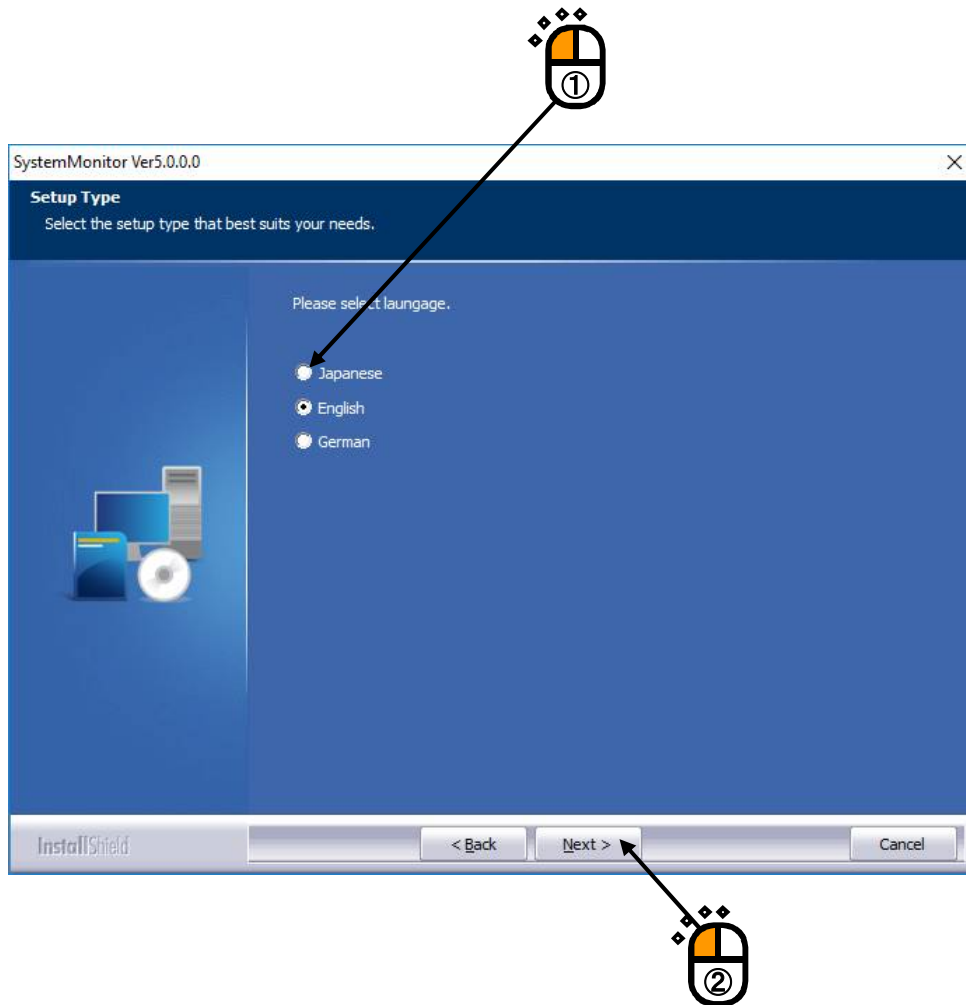
2: **Select “Chamber” only if a temperature/humidity test system with an IMV constant temperature/humidity chamber controller.**

Installing the chamber feature without the use of a temperature/humidity test system may cause the system to be unstable. It may also have an adverse effect on the LAN environment if it is used.

< Step 3 >

A screen to select language appears.

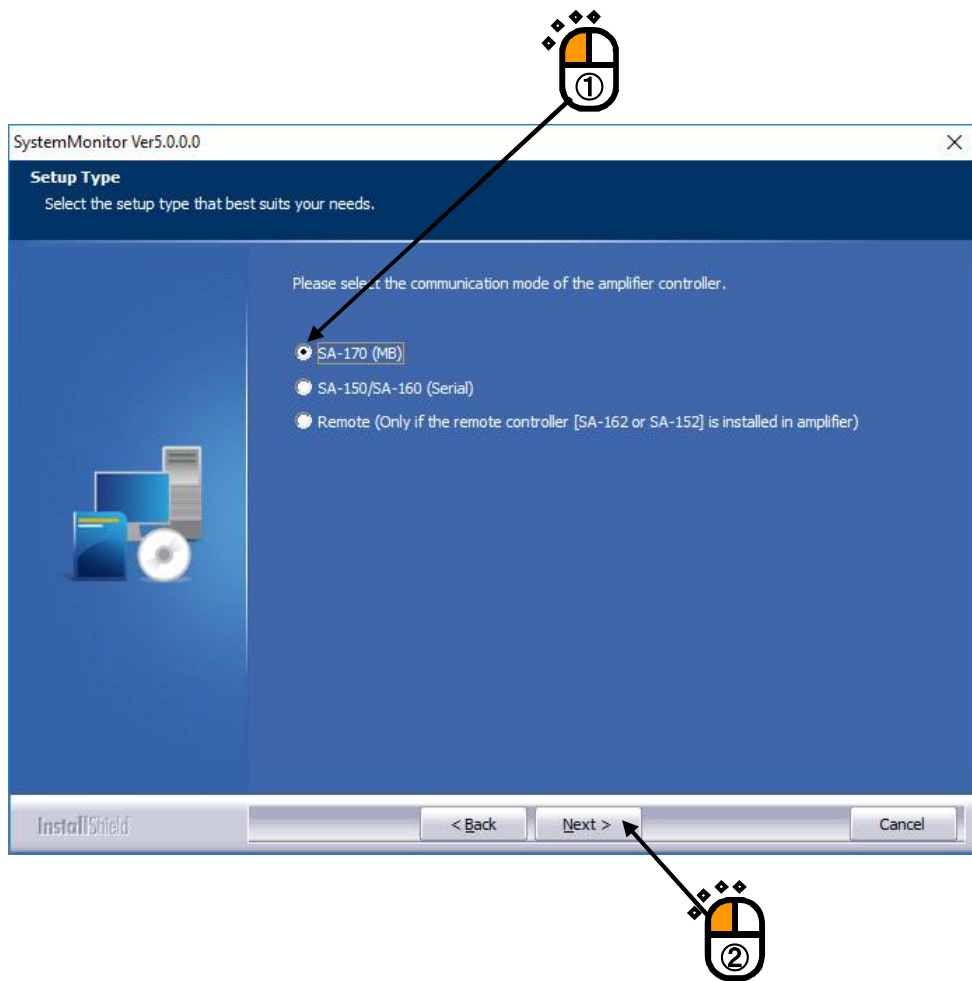
Select language and click on the [Next] button.



< Step 4 >

A screen to select Amplifier Controller appears.

Select the installed Amplifier Controller and click on the [Next] button.



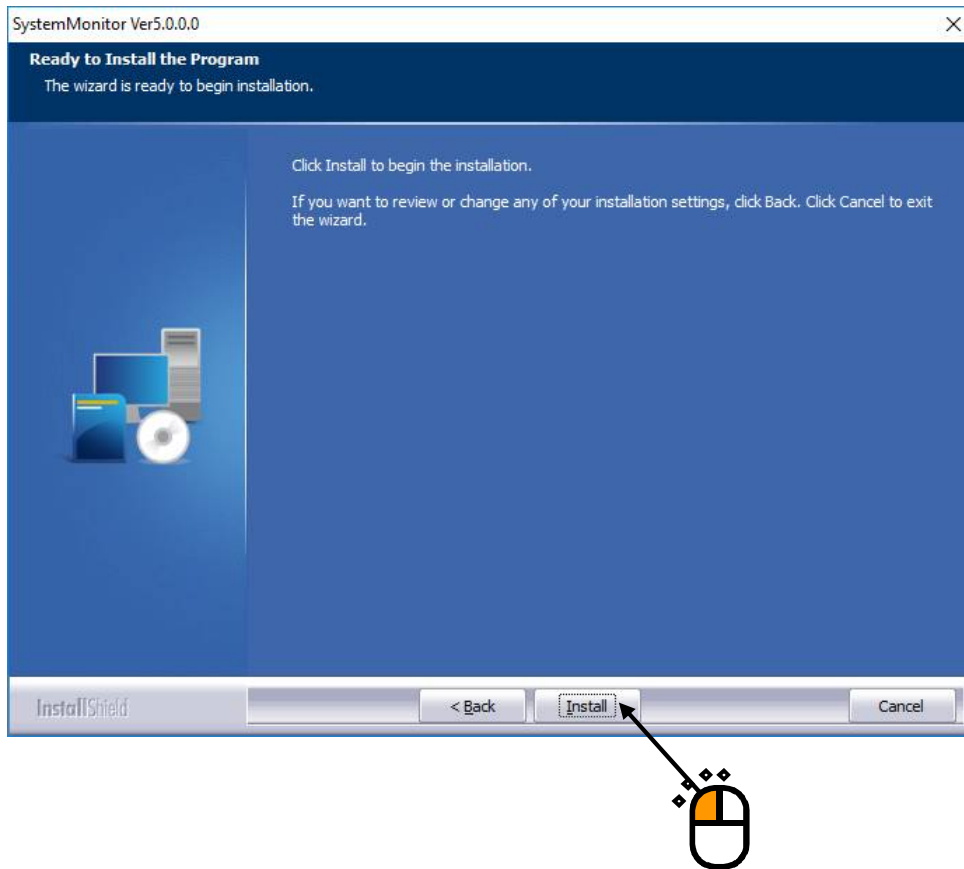
Note) The wrong selection causes malfunction of SystemMonitor.

Select “Remote” only if the remote controller(SA-162 or SA152) is installed in amplifier.

The wrong selection causes malfunction of vibration test system.

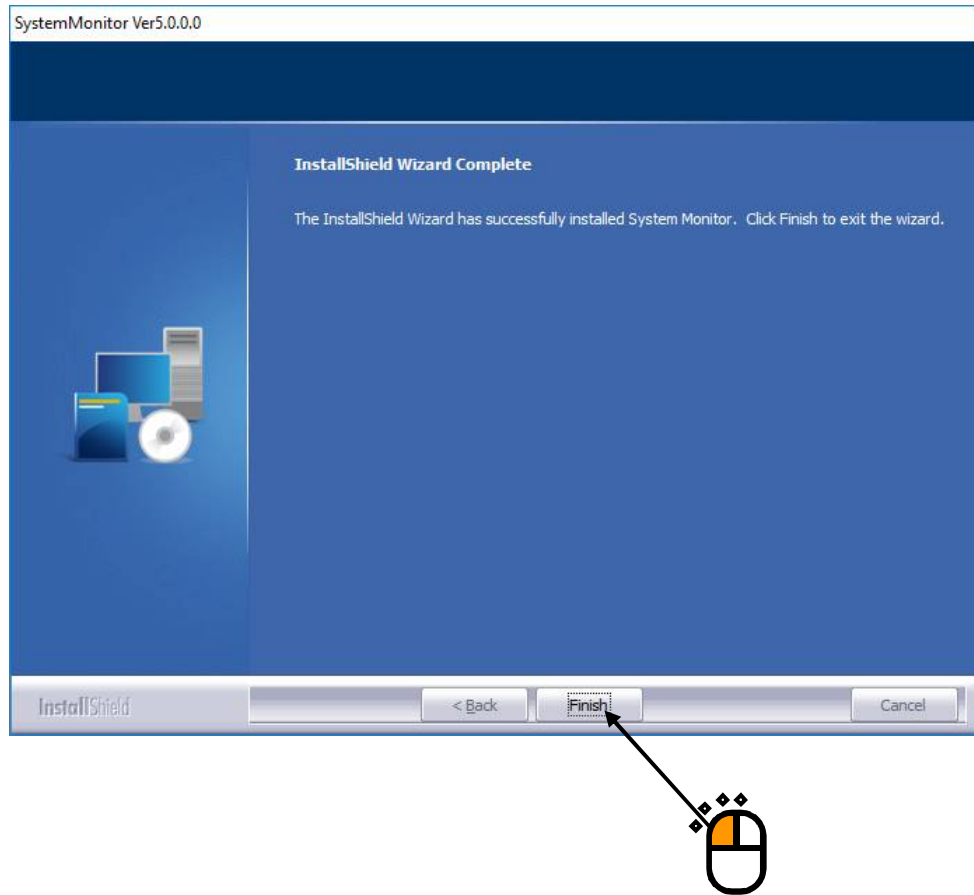
< Step 5 >

The screen of starting installation appears. Press the button of [Install].
Installation is started.



< Step 6 >

When installation is complete, the screen of noticing the completion of installation appears. Press the button of [Finish]



Proceed to the next section.

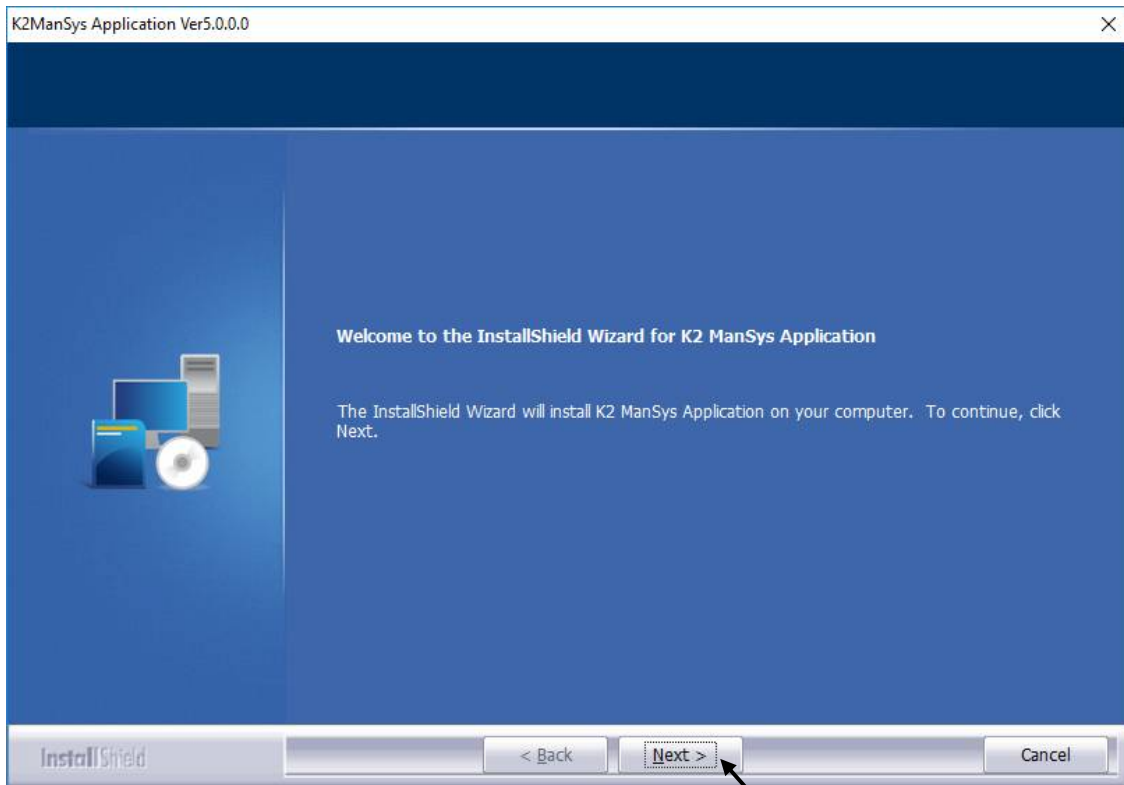
2.2.7 Installation of Combined Test System

If you have purchased Combined Test System, the installation of the Combined Test System software will begin automatically.

If you have not purchased it, please continue to the next section.

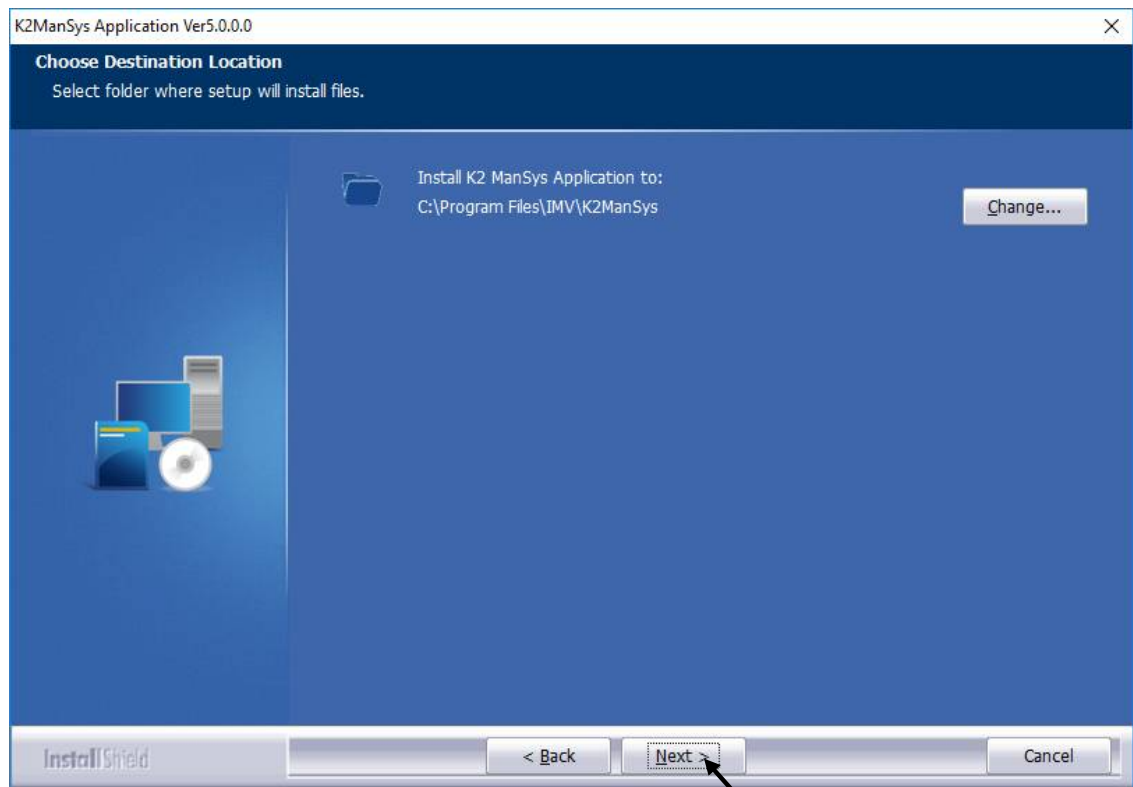
< Step 1 >

The initial screen of installation appears. Press the button of [Next].



< Step 2 >

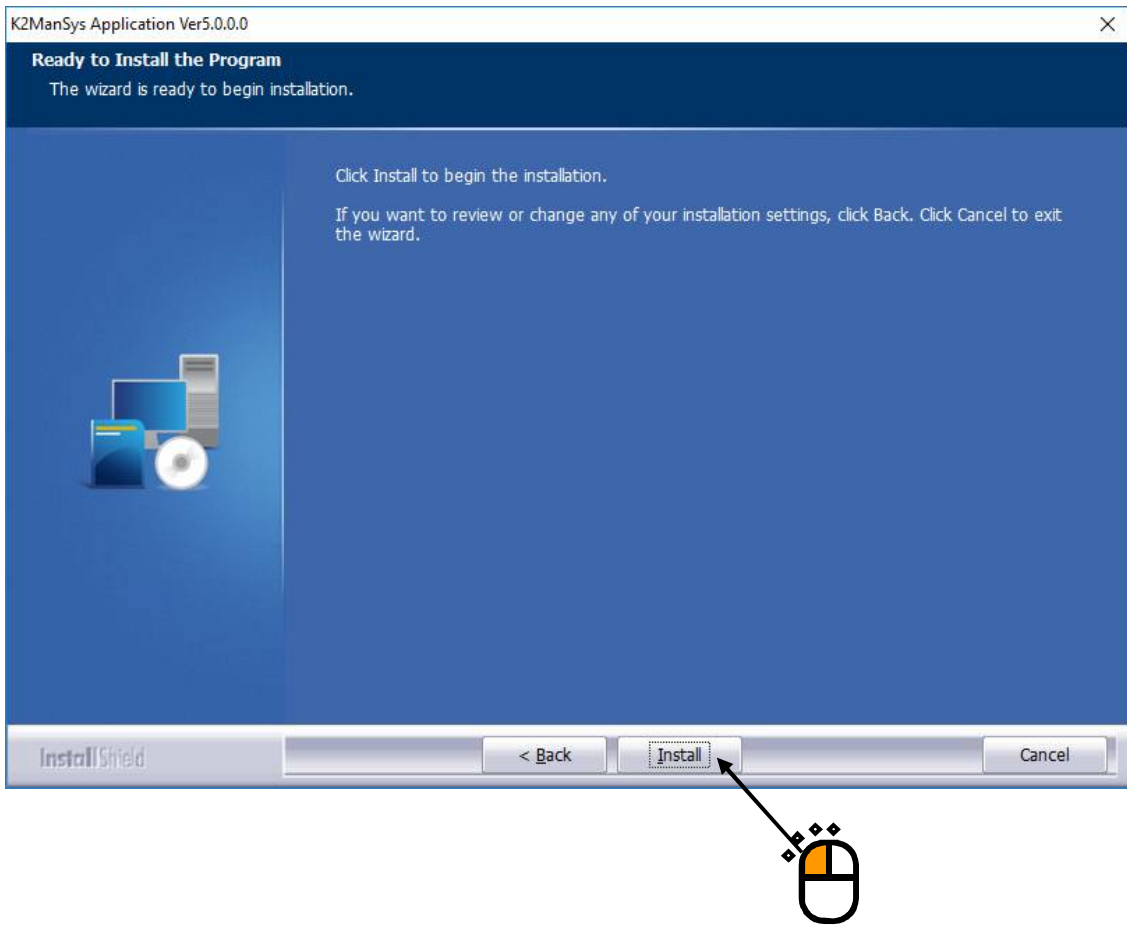
The installation folder selection screen appears. Click the "Next" button.



< Step 3 >

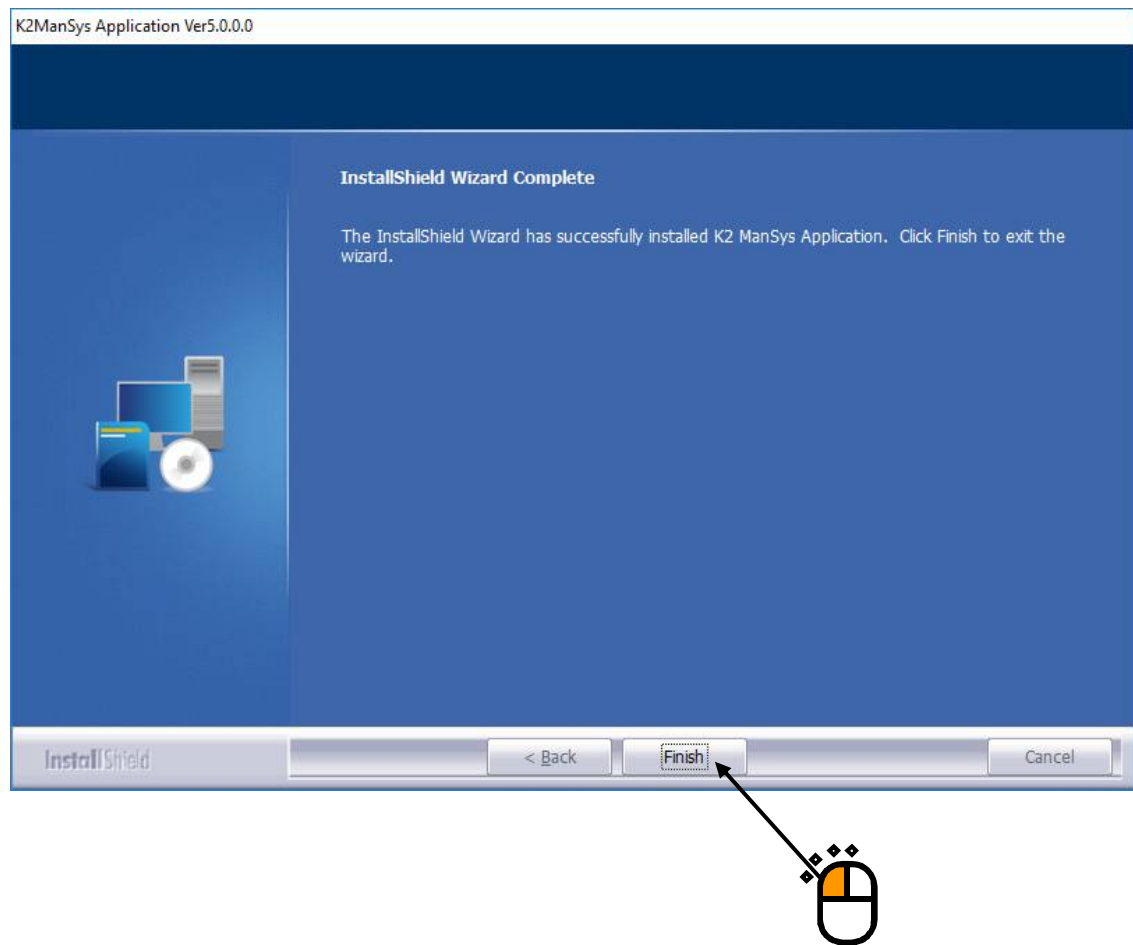
The screen of starting installation appears. Press the button of [Install].

Installation is started.



< Step 4 >

When installation is complete, the screen of noticing the completion of installation appears. Press the button of [Finish]



Proceed to the next section.

2.2.8 Finish the installation of IMV Smart Setup

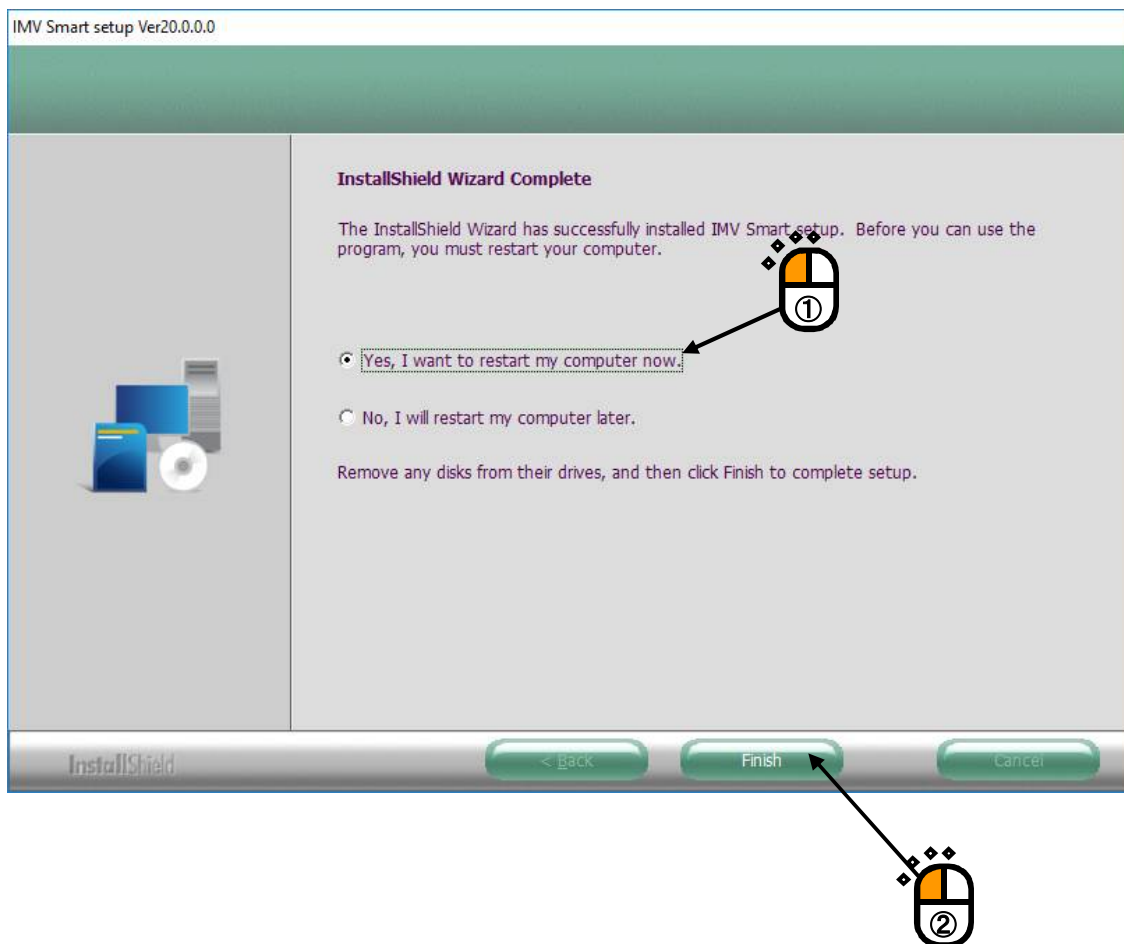
After all the software purchased is installed, IMV Smart Setup will complete the installation process.

< Step 1 >

The installation complete screen of IMV Smart Setup will appear.

Select “Yes, I want to restart my computer now” and click on the [Finish] button.

The PC will be restarted.



After the PC completed its restart, installation of the application is completed.

IMV Start Up is automatically launched after Windows is started. For details, please refer to "2.2.9 IMV Start Up".

If the protect device is inserted into the PC, the protect device becomes valid.

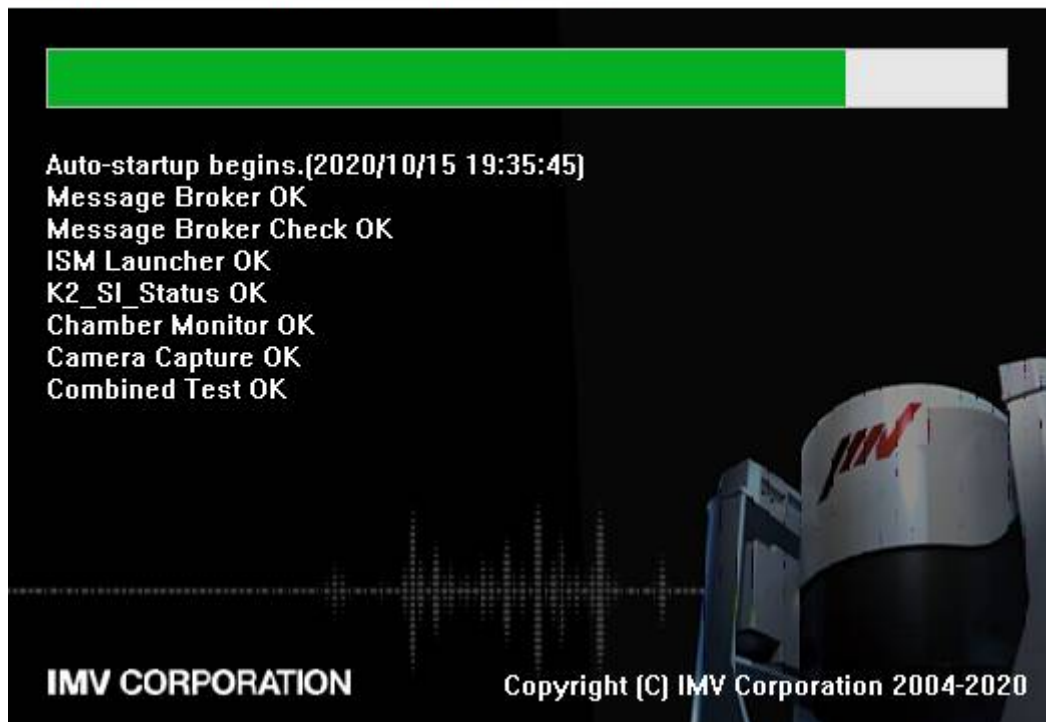
If the installation of the K2 interface board has been completed, the device driver is automatically recognized during restarting.

2.2.9 Automatic execution of IMV Start Up

After IMV Smart Setup is installed, the IMV Startup will be automatically executed after the PC is booted.

The IMV Startup will configure the settings necessary to run the software you have purchased and will automatically close when the settings are completed.

IMV applications are starting... Version 20.0.0.0 (64bit)



Chapter 3 Uninstalling the Software

3.1 Uninstallation of License

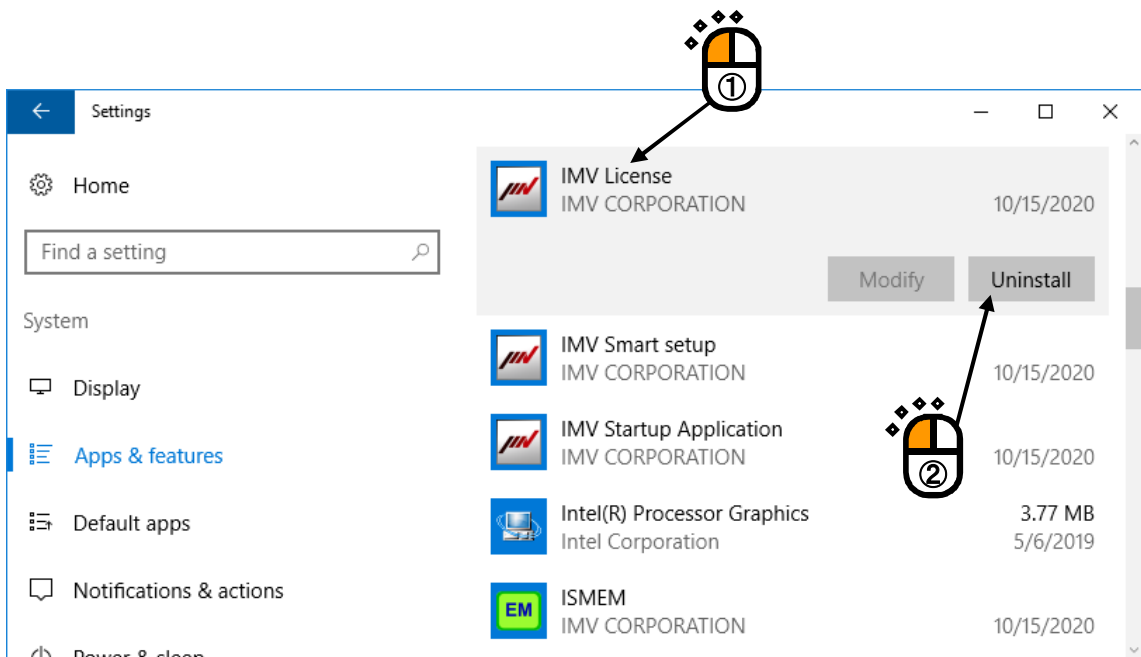
To uninstall the software,

log in to the Windows operating system using the username with the “Administrator” right.

3.1.1 Uninstallation of IMV Licence

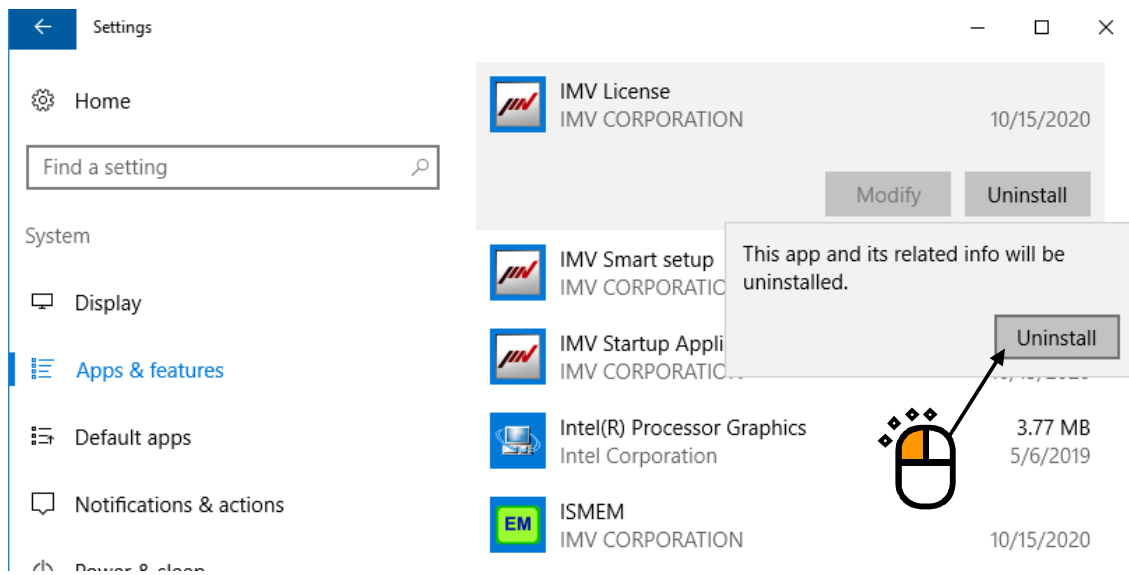
< Step 1 >

Select ‘IMV License’ on the screen of ‘Apps & features’, and then, select ‘Uninstall’.



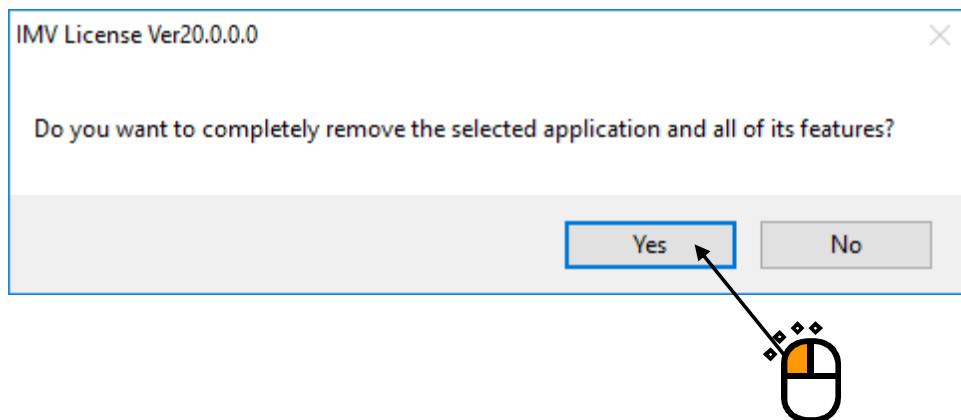
< Step 2 >

When the confirmation screen appears, select "Uninstall".



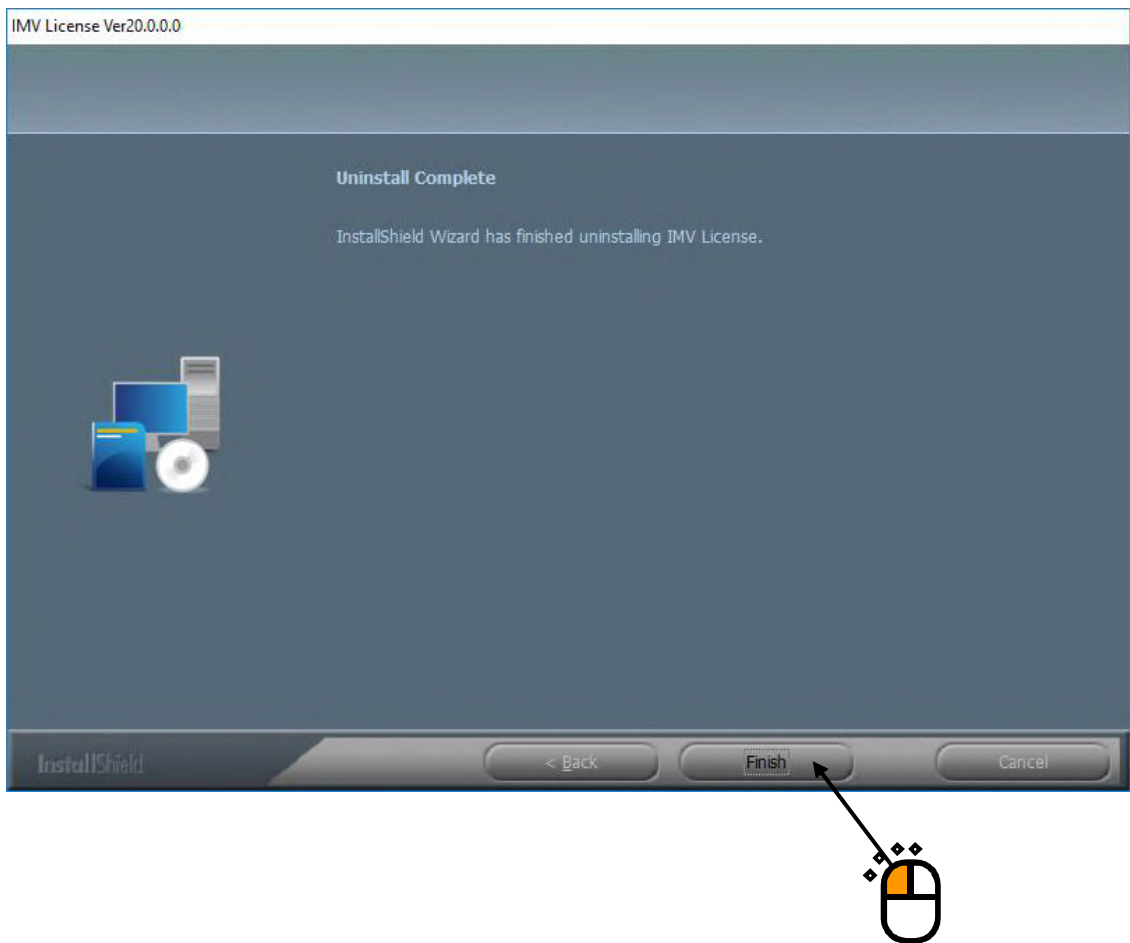
< Step 3 >

The message box asking the confirmation of uninstallation appears. Press the button of [Yes]. Then, uninstallation is started.



< Step 4 >

After the uninstallation is completed, the screen noticing the completion of uninstallation appears. Press the button of [Finish].



Then, uninstallation of license is complete.

3.2 Uninstallation of Application

To uninstall the software,

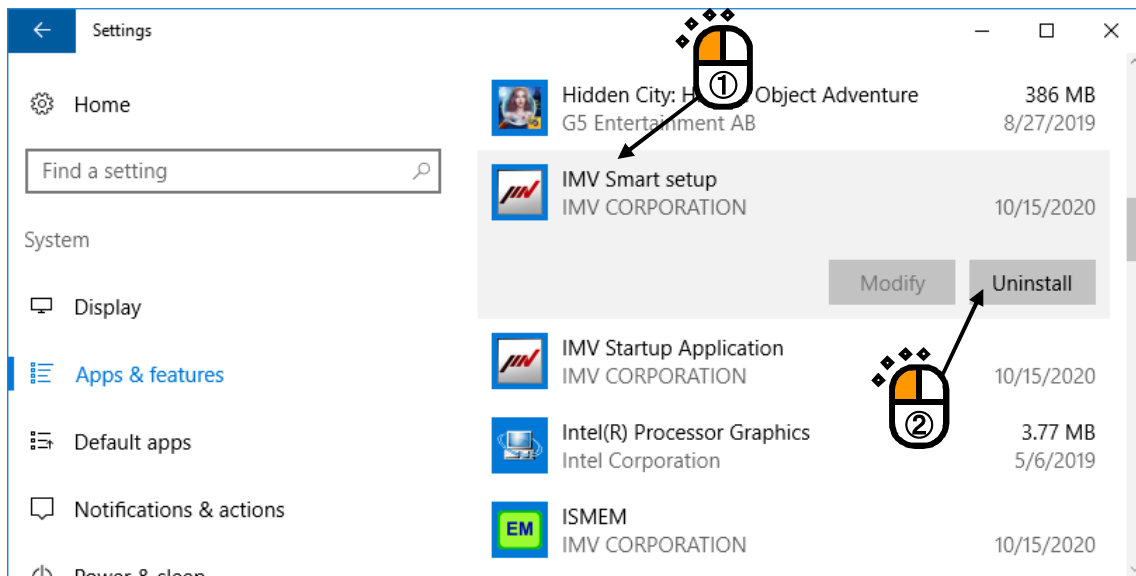
log in to the Windows operating system using the username with the “Administrator” right.

3.2.1 Uninstallation of IMV Smart Setup

Uninstall all of your purchased software at once.

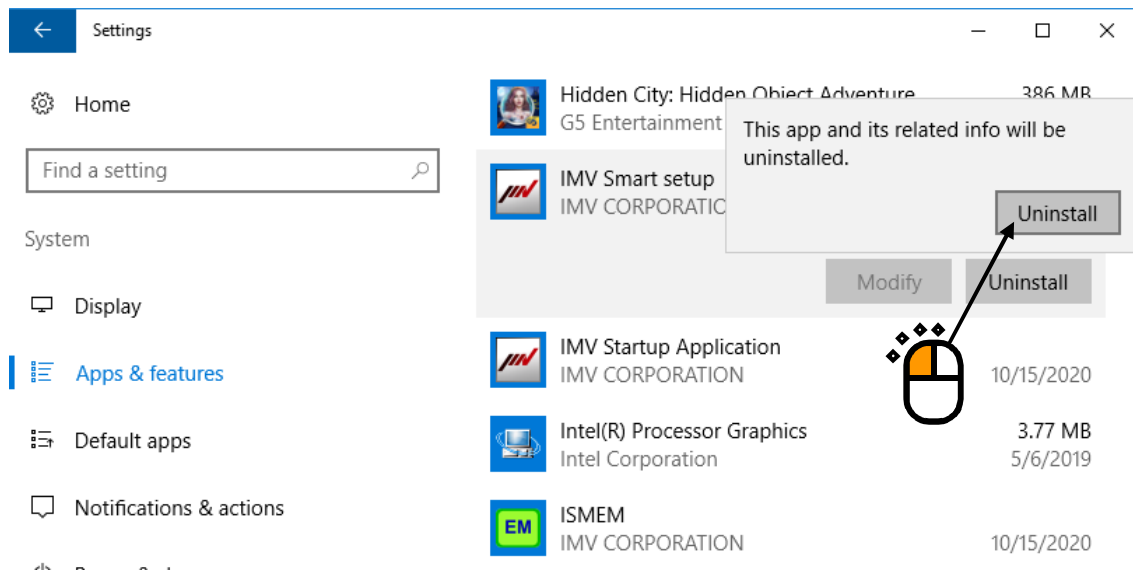
< Step 1 >

Select ‘IMV Smart Setup’ on the screen of ‘Apps & features’, and then, select ‘Uninstall’.



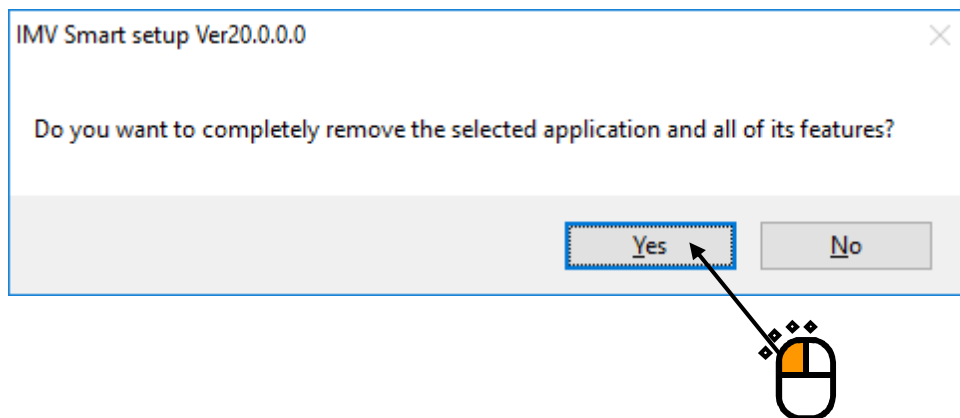
< Step 2 >

When the confirmation screen appears, select "Uninstall".



< Step 3 >

The message box asking the confirmation of uninstallation appears. Press the button of [Yes]. Then, uninstallation is started.

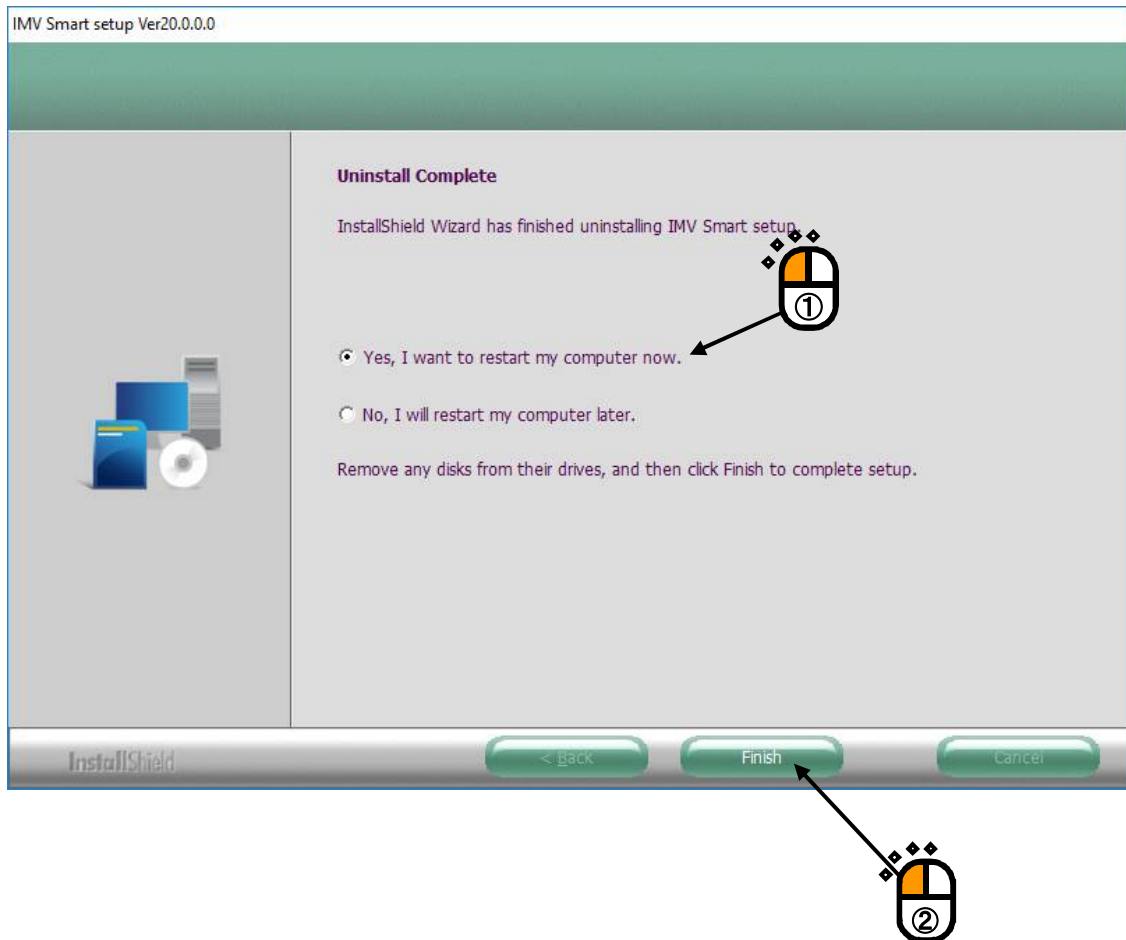


< Step 4 >

After the uninstallation of application is complete, the screen notifying the completion of uninstallation appears.

Select 'Yes, I want to restart my computer now', and press the button of [Finish].

Then, the PC is restarted.



After the restart of the PC is completed, the uninstallation of all applications is complete.

Chapter 4 Upgrading the Software

When upgrading the software, uninstall the software installed already, and then, install a new version software.

This procedure is common to the upgrading of all the “Application and License”.

For operating procedures of the uninstallation of software, refer to “Chapter 3 Uninstallation of Software”.

For operating procedures of the installation of software, refer to “Chapter 2 Installation of Software”

Chapter 5 Supplemental Explanation

5.1 Setting of PC

When using K2 or ISM-EM, use the computer set as below during testing. Otherwise control devices may make operation errors.

After K2 or ISM-EM installation, the computer is automatically set as below. Some of setting items below may be unused for some OS:

- 1) Do not use 'Power Options (Power Saving function)' of PC

Please check that the all following items in 'Power Options Properties' set as 'Never'.

- Turn off monitor
- Turn off hard disks
- System standby

- 2) Disable the Windows tasks unnecessary for the controls that may be periodically executed.

- System Restore (SR)
- Power Efficiency Diagnostics (Analyze System)

- 3) Do not use the visual effects that load the computer, e.g., settings below:

- Disable 'Enable desktop composition'.
- Disable 'Display window content during dragging'.
- Disable 'Enable transparency'.

- 4) Windows update setting is set to 'Check for updates but let me choose whether to install them'.

During testing, do not execute such programs as shown below since they load the computer:

- 1) Do not use antivirus software or Windows Update or other program update.
- 2) Do not use applications that use antivirus software scan or other computer resources.

Operation of software is guaranteed only with the conditions of PC at shipment.

If operation system of PC is updated or any other software is installed after shipment, or under conditions other than those at shipment, operation of software is not guaranteed.