

Specification

Item	Detail	
Product name	SD logger 4 / case type	SD logger 4 / PCB board type
Model name	ESD-CS4A (script version)	ESD-BS4A (script version)
	ESD-CC4A (command version)	ESD-BC4A (command version)
Configurable data bits	7 bits / 8 bits (command version is only 8 bits) * 7-bit setting requires connection to PC	
Settable communication speed	300/1200/2400/4800/9600/19200/38400/57600/115200 bps * Connection to PC is required for 300 / 1200 bps setting	
Configurable parity	None / Odd / Even	
File system	FAT16/FAT32	
Built-in clock	Battery : CR2032 / Battery life : about 7 years (new battery) * Battery at the time of shipment is for monitor	
Supported SD card	SD / SDHC up to 32GB	
Connection connector	RS-232C D-SUB 9-pin male connector	
Operating environment conditions	0 to 60°C 10 to 90% No condensation	
Power supply	8 to 12 VDC, 100 mA Compatible connector 2.1 mm DC jack (center plus)	
External dimensions / Mass	W119.5 x D100 x H35 mm 163 g	W95 x D85 mm 64 g
Accessories	Power Supply : AC adaptor (AC100 V to 240 V, 50/60 Hz ) Output 9 V 1.3 A	

Option

Product name	Specification
RS-232C straight cable	D-SUB 9 pin, female-male connector, 1.8m, commercial product
RS-232C cross cable	D-SUB 9 pin, female-female connector, 1.8m, commercial product
RS-232C-USB cable (Date and time settings are required when connecting to a PC)	D-SUB 9 pin, male-USB TypeA male 0.5m commercial product (1 m cross cable for RS-232C is included. Handshake is not allowed.)

\* Specifications and appearance are subject to change without notice.

Related products



Analog serial converter DT-ASC04i

Converts analog signals of  $\pm 10$  V, 4 to 20 mA DC to serial (RS-232C) output, and records data on SD recorder 4. (A special catalog is available.)



RS-232C power distribution adapter (special order product)

If you use the RS-232C distribution adapter, you can simultaneously record data to the SD logger 4 while sending data to a PC or printer.



Head Office

tel +81 6 6471 3155  
web <https://www.imv.co.jp/e>  
mail [infomes-f@imv.co.jp](mailto:infomes-f@imv.co.jp)

\*The specifications and design are subject to change without notice.

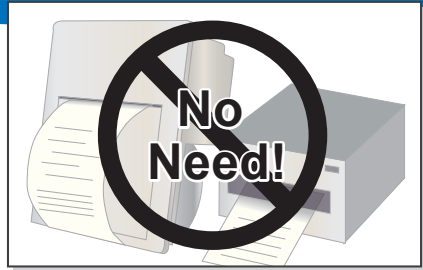
Distributors

If you have any questions, please feel free to contact our distributors.

Low cost small and light serial (RS-232C) data logger

# SD Logger 4

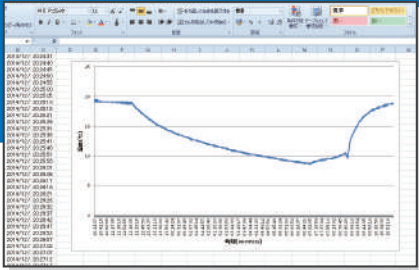
Direct recording of serial data to SD card without the need for a PC.  
Efficient data organization instead of PC, printer, etc.



Request to keep serial data paperless!



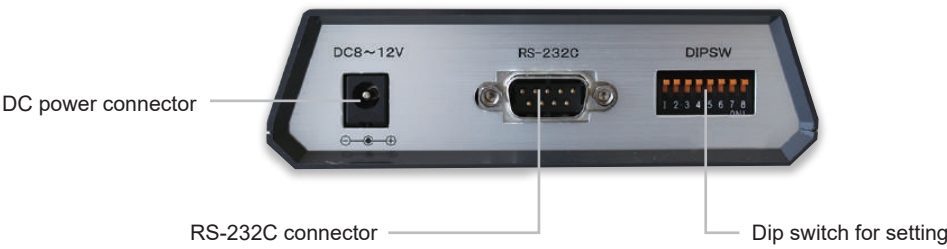
Request to record serial data on SD card!



Request to use serial data with spreadsheet software!



【Back】

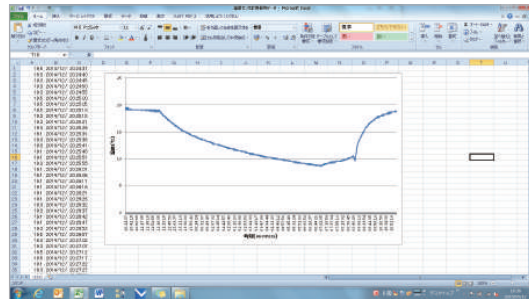


## Features

### Save data to SD card without PC

It is possible to save data directly to the SD card in places where you cannot bring your PC or leave it alone. The saved data can be used with commercially available software.

\* Available software depends on the data format of the device.



Temperature sensor graphing example (spreadsheet software screen)

### Abundant rear switch combinations

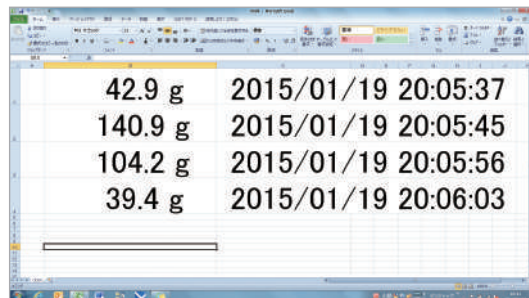
The combination of switches on the back (dip switches) can match the RS-232 specifications (communication speed, data bits, parity) of the connected device.

\* Some settings are made from the PC. If you have any questions, please feel free to contact our distributors.



### Date / Time function

Date and time can be added simultaneously with data acquisition. (Date and time function)



42.9 g	2015/01/19 20:05:37
140.9 g	2015/01/19 20:05:45
104.2 g	2015/01/19 20:05:56
39.4 g	2015/01/19 20:06:03

Electronic balance date / time function example (spreadsheet software screen)

### Error confirmation function

The error can be confirmed by the flashing red LED and the built-in buzzer sound.

Flash on error



### Lightweight and compact

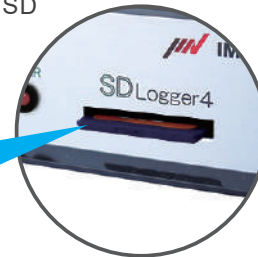
The size and weight that you can hold with one hand allows you to bring it with you anywhere.



### Up to 32GB can be stored

Compatible with SDHC cards and SD cards up to 32GB.

Up to 32GB



### Convenient script function

By writing simple instructions (scripts) to the SD card, It is possible to set the data acquisition timing, etc. to the connected device.

\* We support script creation. Please feel free to contact our distributors.

```
;Script that sends a print command  
;to a balance made by Company A every second  
;Repeat until the END statement.  
#LOOP EVER  
    ;Wait one second.  
    #WAIT TIME 1S  
    ;Send ESC P <cr> <lf>.  
    ;1ES00000A  
;Repeat up to this point.  
#END
```

This script sends a print command to the electronic balance manufactured by Company A every second.

### Data protection function

Even if the power is suddenly cut off, the possibility that the acquired data disappears is extremely low.

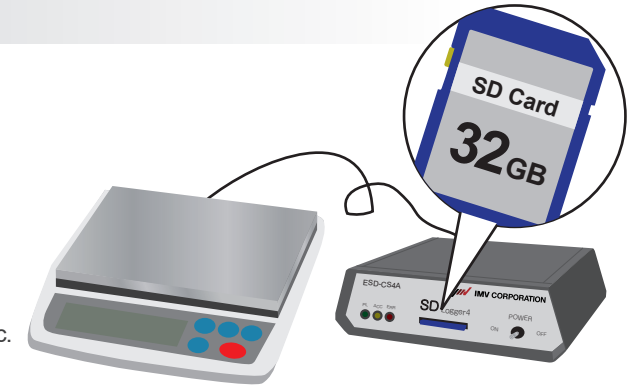
## Use Case

### • Electronic balance

Save measured values to a file instead of a printer. Also used for recording history.

Main customers

- Food / beverage
- Electric machine
- Chemicals / Chemistry
- Government offices, universities, etc.

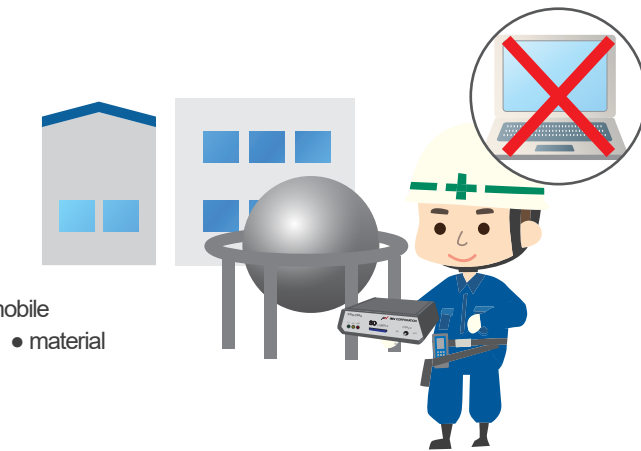


### • Portable measuring equipment

Easily record data, such as gas analyzers, air leak testers, Refractometer, PH meters, etc. without using a PC for measurements while moving inside or outside the company.

Main customers

- Food / beverage
- Electric machine
- Environmental measurement company, etc.
- Chemicals / Chemistry
- Government offices, universities
- Automobile
- material



### • Transportation, construction machinery

Records vibration measurements and brake tests of trains, GPS of ships, fishing boat detectors, and construction equipment operations.

Main customers

- Railways / ships
- Construction equipment, etc.

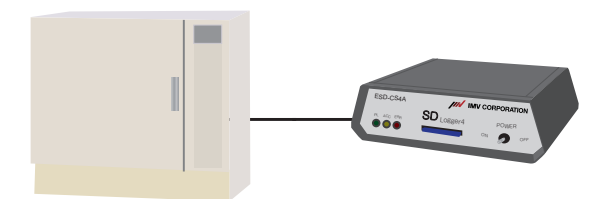


### • Environmental testing machine, oven, incubator, material testing machine, etc.

Paperless recording of data such as temperature, humidity, wind power, water quality, and dust amount from the controller.

Main customers

- Customers using various testing machines such as private companies, government offices, universities, etc.



### • Weather observation equipment

Observation records of various weather data such as wind speed, wind direction, precipitation, atmospheric pressure, and temperature.

Main customers

- Government offices / laboratory / universities / ships, etc.

